



# PhilGEPS

Philippine Government Electronic Procurement System

Central Portal for  
Philippine Government  
Procurement Opportunities

## Bid Notice Abstract

### Invitation to Bid (ITB)

**Reference Number** 8881843  
**Procuring Entity** CARLOS HILADO MEMORIAL STATE UNIVERSITY  
**Title** Conversion of Aqua Laboratory Into School Canteen (Labor and Materials) - Binalbagan Campus, Brgy. Enclaro, Binalbagan, Negros Occidental  
**Area of Delivery** Negros Occidental

<b>Solicitation Number:</b>	CHMSC 22-036-0729-I	<b>Status</b>	Pending
<b>Trade Agreement:</b>	Implementing Rules and Regulations	<b>Associated Components</b>	7
<b>Procurement Mode:</b>	Public Bidding	<b>Bid Supplements</b>	0
<b>Classification:</b>	Civil Works	<b>Document Request List</b>	0
<b>Category:</b>	Construction Projects	<b>Date Published</b>	30/07/2022
<b>Approved Budget for the Contract:</b>	PHP 697,703.42	<b>Last Updated / Time</b>	29/07/2022 17:09 PM
<b>Delivery Period:</b>	60 Day/s	<b>Closing Date / Time</b>	23/08/2022 12:30 PM
<b>Client Agency:</b>			
<b>Contact Person:</b>	Ma. Lorena Fernandez Jugos Administrative Assistant II Mabini Street, Brgy Zone 1 Talisay City Negros Occidental Philippines 6115 63-34-7128404 63-34-7128404 chmsc_bacsec@yahoo.com		

#### Description

CARLOS HILADO MEMORIAL STATE UNIVERSITY  
BIDS AND AWARDS COMMITTEE  
TALISAY CITY, NEGROS OCCIDENTAL

#### INVITATION TO BID

FOR THE CONVERSION OF AQUA LABORATORY INTO SCHOOL CANTEEN  
(LABOR AND MATERIALS) – BINALBAGAN CAMPUS, BRGY. ENCLARO, BINALBAGAN, NEGROS OCCIDENTAL  
CHMSC 22-036-0729-I

1. The Carlos Hilado Memorial State University, through the Corporate Budget for the Contract of 2022 approved by the governing Board (INCOME), intends to apply the sum of SIX HUNDRED NINETY-SEVEN THOUSAND SEVEN HUNDRED THREE PESOS & 42/100 (Php 697,703.42) ONLY being the Approved Budget for the Contract (ABC) to payments under the contract for the CONVERSION OF AQUA LABORATORY INTO SCHOOL CANTEEN (LABOR AND MATERIALS) – BINALBAGAN CAMPUS, BRGY. ENCLARO, BINALBAGAN, NEGROS OCCIDENTAL. Bids received in excess of the ABC shall be automatically rejected at bid opening.
2. The Carlos Hilado Memorial State University now invites bids for the above Procurement Project. Completion of the Works is required within Sixty (60) calendar days upon receipt of Notice to Proceed. Bidders should have completed a contract similar to the Project. The description of an eligible bidder is contained in the Bidding Documents, particularly, in Section II (Instructions to Bidders).
3. Bidding will be conducted through open competitive bidding procedures using the non-discretionary "pass/fail" criterion as specified in the 2016 revised Implementing Rules and Regulations (IRR) of Republic Act (RA) No. 9184.
4. Interested bidders may obtain further information from CARLOS HILADO MEMORIAL STATE UNIVERSITY and inspect the Bidding Documents at the address given below from 8:00 A.M. to 5:00 P.M.

5. A complete set of Bidding Documents may be acquired by interested bidders on July 30 – August 23, 2022 (12:00NN) from given address and website/s below and upon payment of the applicable fee for the Bidding Documents, pursuant to the latest Guidelines issued by the GPPB, in the amount of One Thousand Pesos (Php 1,000.00) Only. The Procuring Entity shall allow the bidder to present its proof of payment for the fees.

6. The CHMSU will hold a Pre-Bid conference on 2:00 P.M., August 9, 2022 at Bidding Room, 2/F Supply and Property Management Bldg., Brgy. Zone 1, Mabini St., Talisay City, Negros Occidental and or through video conferencing or webcasting via Zoom Meeting with ID No. 797 389 7583, Meeting Password 080922, which shall be open to prospective bidders.

7. Bids must be duly received by the BAC Secretariat through (i) manual submission at the office address as indicated below, (ii) online or electronic submission as indicated below, or (iii) both on or before 12:30 P.M., August 23, 2022. Late bids shall not be accepted.

Bids may be submitted through electronic mail to bac.sec@chmsc.edu.ph provided that the bidding documents are compressed into two (2) separate archived folders (zip or rar format) and which each folder shall be labelled as "First Envelope\_Name of Company\_Project Reference Number" and "Second Envelope\_Name of Company\_Project Reference Number" and each is uniquely password-protected;

Bidders must submit the printed copies (Original, Copy 1 and Copy 2) of their bidding documents within 3 calendar days from bid opening.

8. All Bids must be accompanied by a bid security in any of the acceptable forms and in the amount stated in ITB Clause 16.

9. Bid opening shall be on 1:00 P.M., August 23, 2022 at the Bidding Room, 2/F Supply and Property Management Bldg., Brgy. Zone 1, Mabini St., Talisay City, Negros Occidental and/or through Zoom Meeting ID No. 797 389 7583, Meeting Password 082322. Bids will be opened in the presence of the bidders' representatives who choose to attend the activity.

10. The Carlos Hilado Memorial State University reserves the right to reject any and all bids, declare a failure of bidding, or not award the contract at any time prior to contract award in accordance with Sections 35.6 and 41 of the 2016 revised Implementing Rules and Regulations (IRR) of RA No. 9184, without thereby incurring any liability to the affected bidder or bidders.

11. For further information, please refer to:

MISS LIGAYA E. FUENTES  
Head, BAC Secretariat  
Carlos Hilado Memorial State University  
Bidding Room, 2/F Supply and Property Management Bldg.  
Brgy. Zone 1, Mabini St.,  
Talisay City, Negros Occidental  
Email Add.: bac.sec@chmsc.edu.ph  
Telefax No. (034) 712-0003 local 142  
Website: chmsc.edu.ph

12. You may visit the following websites:

For downloading of Bidding Documents: chmsc.edu.ph

For online bid submission: bac.sec@chmsc.edu.ph

ENGR. JUN JUN J. MARQUEZ  
BAC Chairperson

#### Line Items

Item No.	Product/Service Name	Description	Quantity	UOM	Budget (PHP)
1	ONE (1) LOT	Conversion of Aqua Laboratory Into School Canteen (Labor and Materials)	1	Lot	697,703.42

#### Pre-bid Conference

Date	Time	Venue
09/08/2022	2:00:00 PM	Bidding Room, 2/F Supply and Property Management Bldg., Brgy. Zone 1, Mabini St., Talisay City, Negros Occidental and or through video conferencing or webcasting via Zoom Meeting with ID No. 797 389 7583, Meeting Password 080922

**Created by** Rowena De la Vida Prado  
**Date Created** 29/07/2022

The PhilGEPS team is not responsible for any typographical errors or misinformation presented in the system. PhilGEPS only displays information provided for by its clients, and any queries regarding the postings should be directed to the contact person/s of the concerned party.

© 2004-2022 DBM Procurement Service. All rights reserved.

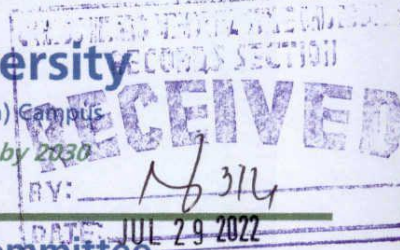
[Help](#) | [Contact Us](#) | [Sitemap](#)



# Carlos Hilado Memorial State University

Alijis Campus • Binalbagan Campus • Fortune Towne Campus • Talisay (Main) Campus

A leading GREEN institution of higher learning in the global community by 2030



## Bids and Awards Committee

### INVITATION TO BID FOR THE CONVERSION OF AQUA LABORATORY INTO SCHOOL CANTEEN (LABOR AND MATERIALS) – BINALBAGAN CAMPUS, BRGY. ENCLARO, BINALBAGAN NEGROS OCCIDENTAL CHMSC 22-036-0729-I

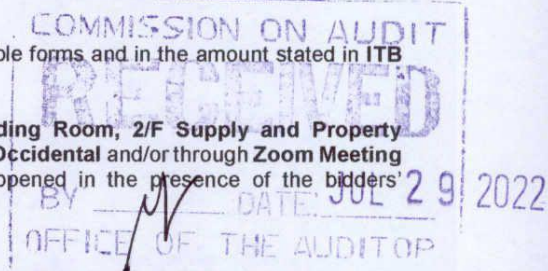


1. The Carlos Hilado Memorial State University, through the Corporate Budget for the Contract of 2022 approved by the governing Board (INCOME), intends to apply the sum of **SIX HUNDRED NINETY-SEVEN THOUSAND SEVEN HUNDRED THREE PESOS & 42/100 (Php 697,703.42) ONLY** being the Approved Budget for the Contract (ABC) to payments under the contract for the **CONVERSION OF AQUA LABORATORY INTO SCHOOL CANTEEN (LABOR AND MATERIALS) – BINALBAGAN CAMPUS, BRGY. ENCLARO, BINALBAGAN, NEGROS OCCIDENTAL**. Bids received in excess of the ABC shall be automatically rejected at bid opening.
2. The Carlos Hilado Memorial State University now invites bids for the above Procurement Project. Completion of the Works is required within **Sixty (60) calendar days upon receipt of Notice to Proceed**. Bidders should have completed a contract similar to the Project. The description of an eligible bidder is contained in the Bidding Documents, particularly, in Section II (Instructions to Bidders).
3. Bidding will be conducted through open competitive bidding procedures using the non-discretionary "pass/fail" criterion as specified in the 2016 revised Implementing Rules and Regulations (IRR) of Republic Act (RA) No. 9184.
4. Interested bidders may obtain further information from CARLOS HILADO MEMORIAL STATE UNIVERSITY and inspect the Bidding Documents at the address given below from 8:00 A.M. to 5:00 P.M.
5. A complete set of Bidding Documents may be acquired by interested bidders on **July 30 – August 23, 2022 (12:00NN)** from given address and website/s below and upon payment of the applicable fee for the Bidding Documents, pursuant to the latest Guidelines issued by the GPPB, in the amount of **One Thousand Pesos (Php 1,000.00)** Only. The Procuring Entity shall allow the bidder to present its proof of payment for the fees.
6. The CHMSU will hold a **Pre-Bid conference** on **2:00 P.M., August 9, 2022** at **Bidding Room, 2/F Supply and Property Management Bldg., Brgy. Zone 1, Mabini St., Talisay City, Negros Occidental** and/or through video conferencing or webcasting via **Zoom Meeting with ID No. 797 389 7583, Meeting Password 080922**, which shall be open to prospective bidders.
7. Bids must be duly received by the BAC Secretariat through (i) manual submission at the office address as indicated below, (ii) online or electronic submission as indicated below, or (iii) both on or before **12:30 P.M., August 23, 2022**. Late bids shall not be accepted.

Bids may be submitted through electronic mail to [bac.sec@chmsc.edu.ph](mailto:bac.sec@chmsc.edu.ph) provided that the bidding documents are compressed into two (2) separate archived folders (zip or rar format) and which each folder shall be labelled as "First Envelope\_Name of Company\_Project Reference Number" and "Second Envelope\_Name of Company\_Project Reference Number" and each is uniquely password-protected;

Bidders must submit the printed copies (Original, Copy 1 and Copy 2) of their bidding documents within 3 calendar days from bid opening.

8. All Bids must be accompanied by a bid security in any of the acceptable forms and in the amount stated in ITB Clause 16.
9. Bid opening shall be on **1:00 P.M., August 23, 2022** at the **Bidding Room, 2/F Supply and Property Management Bldg., Brgy. Zone 1, Mabini St., Talisay City, Negros Occidental** and/or through **Zoom Meeting ID No. 797 389 7583, Meeting Password 082322**. Bids will be opened in the presence of the bidders' representatives who choose to attend the activity.



✉ [bac.sec@chmsc.edu.ph](mailto:bac.sec@chmsc.edu.ph)  
☎ (034) 712 0005 local 142  
🌐 [chmsc.edu.ph](http://chmsc.edu.ph)

## GREEN CHMSU ExCELSIOR!

Excellence • Compassion • Environmentalism • Love of Country • Social Responsibility • Integrity • Openness • Resilience



# Carlos Hilado Memorial State University

Alijis Campus • Binalbagan Campus • Fortune Towne Campus • Talisay (Main) Campus

*A leading GREEN institution of higher learning in the global community by 2030*

## Bids and Awards Committee

10. The Carlos Hilado Memorial State University reserves the right to reject any and all bids, declare a failure of bidding, or not award the contract at any time prior to contract award in accordance with Sections 35.6 and 41 of the 2016 revised Implementing Rules and Regulations (IRR) of RA No. 9184, without thereby incurring any liability to the affected bidder or bidders.

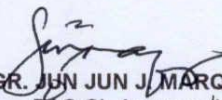
11. For further information, please refer to:

**MISS LIGAYA E. FUENTES**  
Head, BAC Secretariat  
Carlos Hilado Memorial State University  
Bidding Room, 2/F Supply and Property Management Bldg.  
Brgy. Zone 1, Mabini St.,  
Talisay City, Negros Occidental  
Email Add.: [bac.sec@chmsc.edu.ph](mailto:bac.sec@chmsc.edu.ph)  
Telefax No. (034) 712-0003 local 142  
Website: [chmsc.edu.ph](http://chmsc.edu.ph)




12. You may visit the following websites:

For downloading of Bidding Documents: [chmsc.edu.ph](http://chmsc.edu.ph)

For online bid submission: [bac.sec@chmsc.edu.ph](mailto:bac.sec@chmsc.edu.ph)

  
ENGR. JUN JUN J. MARQUEZ  
BAC Chairperson



 [bac.sec@chmsc.edu.ph](mailto:bac.sec@chmsc.edu.ph)  
 (034) 712 0005 local 142  
 [chmsc.edu.ph](http://chmsc.edu.ph)

**GREEN CHMSU ExCELSIOR!**

*Excellence • Compassion • Environmentalism • Love of Country • Social Responsibility • Integrity • Openness • Resilience*

## ***Section II. Instructions to Bidders***

### **Notes on the Instructions to Bidders**

This Section on the Instruction to Bidders (ITB) provides the information necessary for bidders to prepare responsive bids, in accordance with the requirements of the Procuring Entity. It also provides information on bid submission, eligibility check, opening and evaluation of bids, post-qualification, and on the award of contract.

## 1. **Scope of Bid**

The Procuring Entity, **CARLOS HILADO MEMORIAL STATE COLLEGE** invites Bids for the **CONVERSION OF AQUA LABORATORY INTO SCHOOL CANTEEN (LABOR AND MATERIALS) – BINALBAGAN CAMPUS, BRGY. ENCLARO, BINALBAGAN, NEGROS OCCIDENTAL**, with Project Identification Number **CHMSC 22-036-0729-I**.

The Procurement Project (referred to herein as “Project”) is for the construction of Works, as described in Section VI (Specifications).

## 2. **Funding Information**

2.1. The GOP through the source of funding as indicated below for 2022 in the amount of **SIX HUNDRED NINETY-SEVEN THOUSAND SEVEN HUNDRED THREE PESOS & 42/100 (PHP 697,703.42) ONLY**.

2.2. The source of funding is:

- a. NGA, the National Expenditure Program.

## 3. **Bidding Requirements**

The Bidding for the Project shall be governed by all the provisions of RA No. 9184 and its 2016 revised IRR, including its Generic Procurement Manual and associated policies, rules and regulations as the primary source thereof, while the herein clauses shall serve as the secondary source thereof.

Any amendments made to the IRR and other GPPB issuances shall be applicable only to the ongoing posting, advertisement, or invitation to bid by the BAC through the issuance of a supplemental or bid bulletin.

The Bidder, by the act of submitting its Bid, shall be deemed to have inspected the site, determined the general characteristics of the contracted Works and the conditions for this Project, such as the location and the nature of the work; (b) climatic conditions; (c) transportation facilities; (c) nature and condition of the terrain, geological conditions at the site communication facilities, requirements, location and availability of construction aggregates and other materials, labor, water, electric power and access roads; and (d) other factors that may affect the cost, duration and execution or implementation of the contract, project, or work and examine all instructions, forms, terms, and project requirements in the Bidding Documents.

## 4. **Corrupt, Fraudulent, Collusive, Coercive, and Obstructive Practices**

The Procuring Entity, as well as the Bidders and Contractors, shall observe the highest standard of ethics during the procurement and execution of the contract. They or

through an agent shall not engage in corrupt, fraudulent, collusive, coercive, and obstructive practices defined under Annex "I" of the 2016 revised IRR of RA No. 9184 or other integrity violations in competing for the Project.

## 5. Eligible Bidders

- 5.1. Only Bids of Bidders found to be legally, technically, and financially capable will be evaluated.
- 5.2. The Bidder must have an experience of having completed a Single Largest Completed Contract (SLCC) that is similar to this Project, equivalent to at least fifty percent (50%) of the ABC adjusted, if necessary, by the Bidder to current prices using the PSA's CPI, except under conditions provided for in Section 23.4.2.4 of the 2016 revised IRR of RA No. 9184.

A contract is considered to be "similar" to the contract to be bid if it has the major categories of work stated in the **BDS**.

- 5.3. For Foreign-funded Procurement, the Procuring Entity and the foreign government/foreign or international financing institution may agree on another track record requirement, as specified in the Bidding Document prepared for this purpose.
- 5.4. The Bidders shall comply with the eligibility criteria under Section 23.4.2 of the 2016 IRR of RA No. 9184.

## 6. Origin of Associated Goods

There is no restriction on the origin of Goods other than those prohibited by a decision of the UN Security Council taken under Chapter VII of the Charter of the UN.

## 7. Subcontracts

- 7.1. The Bidder may subcontract portions of the Project to the extent allowed by the Procuring Entity as stated herein, but in no case more than fifty percent (50%) of the Project.

The Procuring Entity has prescribed that:

- a. Subcontracting is allowed. The portions of Project and the maximum percentage allowed to be subcontracted are indicated in the **BDS**, which shall not exceed fifty percent (50%) of the contracted Works.

- 7.1. The Bidder must submit together with its Bid the documentary requirements of the subcontractor(s) complying with the eligibility criteria stated in **ITB** Clause 5 in accordance with Section 23.4 of the 2016 revised IRR of RA No. 9184 pursuant to Section 23.1 thereof.
- 7.2. The Supplier may identify its subcontractor during the contract implementation stage. Subcontractors identified during the bidding may be changed during the



shall consider the conditions in the evaluation of Bids under Section 32.2 of 2016 revised IRR of RA No. 9184.

- 19.2. If the Project allows partial bids, all Bids and combinations of Bids as indicated in the **BDS** shall be received by the same deadline and opened and evaluated simultaneously so as to determine the Bid or combination of Bids offering the lowest calculated cost to the Procuring Entity. Bid Security as required by **ITB** Clause 16 shall be submitted for each contract (lot) separately.
- 19.3. In all cases, the NFCC computation pursuant to Section 23.4.2.6 of the 2016 revised IRR of RA No. 9184 must be sufficient for the total of the ABCs for all the lots participated in by the prospective Bidder.

## **20. Post Qualification**

Within a non-extendible period of five (5) calendar days from receipt by the Bidder of the notice from the BAC that it submitted the Lowest Calculated Bid, the Bidder shall submit its latest income and business tax returns filed and paid through the BIR Electronic Filing and Payment System (eFPS), and other appropriate licenses and permits required by law and stated in the **BDS**.

## **21. Signing of the Contract**

The documents required in Section 37.2 of the 2016 revised IRR of RA No. 9184 shall form part of the Contract. Additional Contract documents are indicated in the **BDS**.

## ***Section III. Bid Data Sheet***

### **Notes on the Bid Data Sheet (BDS)**

The Bid Data Sheet (BDS) consists of provisions that supplement, amend, or specify in detail, information, or requirements included in the ITB found in Section II, which are specific to each procurement.

This Section is intended to assist the Procuring Entity in providing the specific information in relation to corresponding clauses in the ITB and has to be prepared for each specific procurement.

The Procuring Entity should specify in the BDS information and requirements specific to the circumstances of the Procuring Entity, the processing of the procurement, and the bid evaluation criteria that will apply to the Bids. In preparing the BDS, the following aspects should be checked:

- a. Information that specifies and complements provisions of the ITB must be incorporated.
- b. Amendments and/or supplements, if any, to provisions of the ITB as necessitated by the circumstances of the specific procurement, must also be incorporated.

## Bid Data Sheet

ITB Clause			
5.2	For this purpose, contracts similar to the Project refer to contracts which have the same major categories of work, which shall be: <ol style="list-style-type: none"> <li>1. Rehabilitation Works</li> <li>2. Electrical Works</li> <li>3. Architectural Works</li> <li>4. Structural Works</li> <li>5. Mechanical Works</li> </ol>		
7.1	Subcontracting is <b>not allowed</b>		
10.3	Minimum PCAB Registration/ PCAB License  <b>Small B (up to 30 Million)</b>		
10.4	The key personnel must meet the required minimum years of experience set below:		
	Key Personnel	General Experience	Relevant Experience(years)
	Daily required site personnel		
	1. Project Engineer	Registered Civil Engineer	3
	2. Foreman	High School Graduate	3
	3. Construction Safety and Health Personnel	With HSE/COSH Training	3
	4. Materials Engineer	Registered Materials Engineer	2
10.5	The minimum major equipment requirements are the following:		
	<u>Equipment</u>	<u>Capacity</u>	<u>Number of Units</u>
	Service Vehicle		1
	One Bagger Mixer		1
	Welding Machine		1
	Plate Compactor		1
	Hand Drill		1
	Cut off Machine		1
	Grinder		2
	Jack Hammer		2
	Concrete Stick Vibrator		1
12	<b>The Approved Budget for the Contract (ABC) is SIX HUNDRED NINETY- SEVEN THOUSAND SEVEN HUNDRED THREE PESOS &amp; 42/100 (PhP 697,703.42) ONLY.</b>		
	Any bid with a financial component exceeding this amount shall not be accepted.		

15.1	<p>The bid security shall be in the form of a Bid Securing Declaration or any of the following forms and amounts:</p> <p>a. The amount of not less than <b>PhP. 13,954.07 (2% of ABC)</b>, if bid security is in cash, cashier's/manager's check, bank draft/guarantee or irrevocable letter of credit;</p> <p>b. The amount of not less than <b>PhP 34,885.17 (5% of ABC)</b> if bid security is in Surety Bond.</p>
19.2	Partial bids are not allowed.
20	No further Instructions.
21	<p>Additional contract documents relevant to the Project:</p> <ol style="list-style-type: none"> <li>1) Construction Schedule/GANTT Chart (MS Project Format) &amp; S-curve</li> <li>2) Manpower Schedule</li> <li>3) Construction Methods</li> <li>4) Equipment Utilization Schedule</li> <li>5) Construction Safety and Health Program (approved by the DOLE)</li> <li>6) PERT/CPM</li> <li>7) Statement of Cash Flow &amp; Payment Schedule</li> <li>8) Soft Copy of all submitted documents in PDF File (Submit in USB Flash Drive)</li> </ol>

## ***Section IV. General Conditions of Contract***

### **Notes on the General Conditions of Contract**

The General Conditions of Contract (GCC) in this Section, read in conjunction with the Special Conditions of Contract in Section V and other documents listed therein, should be a complete document expressing all the rights and obligations of the parties.

Matters governing performance of the Contractor, payments under the contract, or matters affecting the risks, rights, and obligations of the parties under the contract are included in the GCC and Special Conditions of Contract.

Any complementary information, which may be needed, shall be introduced only through the Special Conditions of Contract.

## 1. Scope of Contract

This Contract shall include all such items, although not specifically mentioned, that can be reasonably inferred as being required for its completion as if such items were expressly mentioned herein. All the provisions of RA No. 9184 and its 2016 revised IRR, including the Generic Procurement Manual, and associated issuances, constitute the primary source for the terms and conditions of the Contract, and thus, applicable in contract implementation. Herein clauses shall serve as the secondary source for the terms and conditions of the Contract.

This is without prejudice to Sections 74.1 and 74.2 of the 2016 revised IRR of RA No. 9184 allowing the GPPB to amend the IRR, which shall be applied to all procurement activities, the advertisement, posting, or invitation of which were issued after the effectivity of the said amendment.

## 2. Sectional Completion of Works

If sectional completion is specified in the **Special Conditions of Contract (SCC)**, references in the Conditions of Contract to the Works, the Completion Date, and the Intended Completion Date shall apply to any Section of the Works (other than references to the Completion Date and Intended Completion Date for the whole of the Works).

## 3. Possession of Site

4.1. The Procuring Entity shall give possession of all or parts of the Site to the Contractor based on the schedule of delivery indicated in the **SCC**, which corresponds to the execution of the Works. If the Contractor suffers delay or incurs cost from failure on the part of the Procuring Entity to give possession in accordance with the terms of this clause, the Procuring Entity's Representative shall give the Contractor a Contract Time Extension and certify such sum as fair to cover the cost incurred, which sum shall be paid by Procuring Entity.

4.2. If possession of a portion is not given by the above date, the Procuring Entity will be deemed to have delayed the start of the relevant activities. The resulting adjustments in contract time to address such delay may be addressed through contract extension provided under Annex "E" of the 2016 revised IRR of RA No. 9184.

## 4. The Contractor's Obligations

The Contractor shall employ the key personnel named in the Schedule of Key Personnel indicating their designation, in accordance with **ITB** Clause 10.3 and specified in the **BDS**, to carry out the supervision of the Works.

The Procuring Entity will approve any proposed replacement of key personnel only if their relevant qualifications and abilities are equal to or better than those of the personnel listed in the Schedule.

## **5. Performance Security**

- 5.1. Within ten (10) calendar days from receipt of the Notice of Award from the Procuring Entity but in no case later than the signing of the contract by both parties, the successful Bidder shall furnish the performance security in any of the forms prescribed in Section 39 of the 2016 revised IRR.
- 5.2. The Contractor, by entering into the Contract with the Procuring Entity, acknowledges the right of the Procuring Entity to institute action pursuant to RA No. 3688 against any subcontractor be they an individual, firm, partnership, corporation, or association supplying the Contractor with labor, materials and/or equipment for the performance of this Contract.

## **6. Site Investigation Reports**

The Contractor, in preparing the Bid, shall rely on any Site Investigation Reports referred to in the SCC supplemented by any information obtained by the Contractor.

## **7. Warranty**

- 7.1. In case the Contractor fails to undertake the repair works under Section 62.2.2 of the 2016 revised IRR, the Procuring Entity shall forfeit its performance security, subject its property(ies) to attachment or garnishment proceedings, and perpetually disqualify it from participating in any public bidding. All payables of the GOP in his favor shall be offset to recover the costs.
- 7.2. The warranty against Structural Defects/Failures, except that occasioned-on force majeure, shall cover the period from the date of issuance of the Certificate of Final Acceptance by the Procuring Entity. Specific duration of the warranty is found in the SCC.

## **8. Liability of the Contractor**

Subject to additional provisions, if any, set forth in the SCC, the Contractor's liability under this Contract shall be as provided by the laws of the Republic of the Philippines.

If the Contractor is a joint venture, all partners to the joint venture shall be jointly and severally liable to the Procuring Entity.

## **9. Termination for Other Causes**

Contract termination shall be initiated in case it is determined *prima facie* by the Procuring Entity that the Contractor has engaged, before, or during the implementation of the contract, in unlawful deeds and behaviors relative to contract acquisition and implementation, such as, but not limited to corrupt, fraudulent, collusive, coercive, and obstructive practices as stated in **ITB** Clause 4.

## **10. Dayworks**

Subject to the guidelines on Variation Order in Annex "E" of the 2016 revised IRR of RA No. 9184, and if applicable as indicated in the SCC, the Dayworks rates in the Contractor's Bid shall be used for small additional amounts of work only when the Procuring Entity's Representative has given written instructions in advance for additional work to be paid for in that way.

## **11. Program of Work**

11.1. The Contractor shall submit to the Procuring Entity's Representative for approval the said Program of Work showing the general methods, arrangements, order, and timing for all the activities in the Works. The submissions of the Program of Work are indicated in the SCC.

11.2. The Contractor shall submit to the Procuring Entity's Representative for approval an updated Program of Work at intervals no longer than the period stated in the SCC. If the Contractor does not submit an updated Program of Work within this period, the Procuring Entity's Representative may withhold the amount stated in the SCC from the next payment certificate and continue to withhold this amount until the next payment after the date on which the overdue Program of Work has been submitted.

## **12. Instructions, Inspections and Audits**

The Contractor shall permit the GOP or the Procuring Entity to inspect the Contractor's accounts and records relating to the performance of the Contractor and to have them audited by auditors of the GOP or the Procuring Entity, as may be required.

## **13. Advance Payment**

The Procuring Entity shall, upon a written request of the Contractor which shall be submitted as a Contract document, make an advance payment to the Contractor in an amount not exceeding fifteen percent (15%) of the total contract price, to be made in lump sum, or at the most two installments according to a schedule specified in the SCC, subject to the requirements in Annex "E" of the 2016 revised IRR of RA No. 9184.

## **14. Progress Payments**

The Contractor may submit a request for payment for Work accomplished. Such requests for payment shall be verified and certified by the Procuring Entity's Representative/Project Engineer. Except as otherwise stipulated in the SCC, materials and equipment delivered on the site but not completely put in place shall not be included for payment.

## **15. Operating and Maintenance Manuals**

15.1. If required, the Contractor will provide "as built" Drawings and/or operating and maintenance manuals as specified in the SCC.



- 15.2. If the Contractor does not provide the Drawings and/or manuals by the dates stated above, or they do not receive the Procuring Entity's Representative's approval, the Procuring Entity's Representative may withhold the amount stated in the SCC from payments due to the Contractor.

## ***Section V. Special Conditions of Contract***

### **Notes on the Special Conditions of Contract**

Similar to the BDS, the clauses in this Section are intended to assist the Procuring Entity in providing contract-specific information in relation to corresponding clauses in the GCC found in Section IV.

The Special Conditions of Contract (SCC) complement the GCC, specifying contractual requirements linked to the special circumstances of the Procuring Entity, the Procuring Entity's country, the sector, and the Works procured. In preparing this Section, the following aspects should be checked:

- a. Information that complements provisions of the GCC must be incorporated.
- b. Amendments and/or supplements to provisions of the GCC as necessitated by the circumstances of the specific purchase, must also be incorporated.

However, no special condition which defeats or negates the general intent and purpose of the provisions of the GCC should be incorporated herein.

# Special Conditions of Contract

GCC Clause													
2	<p>The <b>Intended Completion Date</b> is</p> <p><b>60 calendar days upon receipt of the Notice to Proceed</b></p> <p><i>NOTE: The contract duration shall be reckoned from the start date and not from contract effectivity date.</i></p>												
4.1	The <b>CHMSU</b> shall give possession of all parts of the Site to the Contractor upon receipt of Notice to Proceed by the latter.												
6	No further instruction												
7.2	<p><i>In case of permanent structures, such as buildings of types 4 and 5 as classified under the National Building Code of the Philippines and other structures made of steel, iron, or concrete which comply with relevant structural codes (e.g., DPWH Standard Specifications), such as, but not limited to, steel/concrete bridges, flyovers, aircraft movement areas, ports, dams, tunnels, filtration and treatment plants, sewerage systems, power plants, transmission and communication towers, railway system, and other similar permanent structures: Fifteen (15) years.</i></p>												
8	<p>The Contractor shall employ the following <b>Key Personnel</b> as stated in the BDS.</p> <ol style="list-style-type: none"> <li>1. Project Engineer</li> <li>2. Construction Safety and Health personnel</li> <li>3. Materials Engineer</li> <li>4. Foreman</li> </ol> <p>The contractor must ensure that nominated and duly approved key personnel will not be demobilized from site unless replacement is duly evaluated and approved.</p> <p>The non-availability of the following key personnel from the project site will be subject to penalty/deduction from the next billing:</p> <table border="1" style="margin-left: auto; margin-right: auto; border-collapse: collapse;"> <thead> <tr> <th style="text-align: center;">No.</th> <th style="text-align: center;">Key Personnel</th> <th style="text-align: center;">Amount of Deduction per Day of Non-appearance</th> </tr> </thead> <tbody> <tr> <td style="text-align: center;">1.</td> <td>Project Engineer</td> <td style="text-align: center;">P800</td> </tr> <tr> <td style="text-align: center;">2.</td> <td>Construction Safety &amp; Health Personnel</td> <td style="text-align: center;">P700</td> </tr> <tr> <td style="text-align: center;">3.</td> <td>Foreman</td> <td style="text-align: center;">P500</td> </tr> </tbody> </table> <p>The following condition will be ground for withholding of payment for the next billing.</p>	No.	Key Personnel	Amount of Deduction per Day of Non-appearance	1.	Project Engineer	P800	2.	Construction Safety & Health Personnel	P700	3.	Foreman	P500
No.	Key Personnel	Amount of Deduction per Day of Non-appearance											
1.	Project Engineer	P800											
2.	Construction Safety & Health Personnel	P700											
3.	Foreman	P500											

	<ol style="list-style-type: none"> <li>1. Poor supervision and inaction of the concerned contractor to the items and points included on Site Observation Reports (SOR's), Official Letters and other form of instructions and reports related to any observed non-conformity and non-compliance to the relevant clauses of the contract and the technical specifications – P500/ point.</li> <li>2. Prescribed (PPE's) Personal Protective Equipment       <ol style="list-style-type: none"> <li>3.a No safety hats – P500/worker/day of occurrence</li> <li>3.b No safety shoes – P500/worker/day of occurrence</li> <li>3.c Non- availability or improper use of the body harness and other life-saving equipment on site – P500/worker/day of occurrence.</li> <li>3.d. Non wearing of face mask – P500/worker/day of occurrence.</li> </ol> </li> <li>3. Non-conformance to the Construction Safety Guidelines for the implementation of all DPWH Infrastructure Projects During the COVID-19 Public Health Crisis (DPWH DO. 35 s.2020) – P2,500/day of occurrence.</li> <li>4. Non-conformance to school guidelines especially the non-smoking policy – P500/day of occurrence.</li> <li>5. Implementation of critical works without permit such as concrete pouring, installation of devices, wires and conduits without prior samples and approval and other forms of work – Php5,000.00/point.</li> <li>6. Non-submission of reports such as but not limited to, the Daily Reports and Look Ahead Schedules– Php. 500.00/day of occurrence and delay.</li> <li>7. Non-submission of brochures and samples of materials prior to installation at site and installation of unapproved materials – Php. 5,000/point.</li> <li>8. Non-availability of pledged equipment and manpower at site. – Php. 500.00/day of occurrence.</li> <li>9. Non-Compliance to the college rules and regulations especially on the non-smoking policy – P500.00/occurrence.</li> </ol>
10	a. No day works are applicable to the contract.
11.1	The Contractor shall submit the Program of Work to the Procuring Entity's Representative within 7 days of delivery of the Notice of Award.

11.2	<p>The period of Program of Work updates is every fifteen (15) days.</p> <p>The amount to be withheld for late submission of an updated Program of Work is FIFTEEN THOUSAND PESOS (Php15,000.00) only. Other relevant rules and regulations as well as communication protocol shall be discussed during the pre-bid conference and shall form part of the contract. Copy of which given to the contractor on the date for the conduct of the pre-construction conference.</p>
13	No advance payment will be given to the contractor.
14	<i>No further instructions</i>
15.1	<p>The date by which operating and maintenance manuals are required during the commissioning of each of the equipment to be installed by the contractor.</p> <p>The date by which “as built” drawings are required will be before the processing of the occupancy permit or fifteen (15) calendar days from the final handing over whichever comes earlier.</p>
15.2	The amount to be withheld for failing to produce “as built” drawings and/or operating and maintenance manuals by the date required is TWENTY-FIVE THOUSAND PESOS (Php25,000.00) ONLY for each requirement.



Republic of the Philippines  
**CARLOS HILADO MEMORIAL STATE UNIVERSITY**  
Talisay City, Negros Occidental

**PROJECT REFERENCE No.: CHMSC 22-036-0729-I**

**I.PROJECT TITLE: CONVERSION OF AQUA LABORATORY INTO SCHOOL CANTEEN**

**II.PROJECT LOCATION: CHMSU-Binalbagan Campus**

**III.SUBJECT: PROGRAM OF WORKS**

**VI. SCOPE OF WORKS**

**1.0 GENERAL REQUIREMENTS**

**1.1 Mobilization and Demobilization**

**1.2 Site clearing, cleaning and hauling**

1.2.1 floor fully polished /buffing

**1.3 Safety Occupational Hazards**

**1.4 Dismantling/Demolition Works**

**1.4.1 Removal of old existing**

old existing counter , old existing windows,white board/black board, fish

1.4.2 health lab.

**1.5 Earth works/ Backfill/excavation**

**2.0 Structural Works**

**2.1 Rebars Works**

**2.1.1 Installation of new:**

2.1.1.1 CHB Walls, Roof beams,column, foofings , wall footings

2.1.1.2 Grease Trap

**2.2 Concreting Works**

**2.2.1 Construction of New:**

2.2.1.1 kitchen counter, lintel beams ,Roof beams,column, foofings , wall footings

2.2.1.2 Grease Trap

**2.3 Steel Works**

**2.3.1 Installation/fabrication :**

2.3.1.1 rafter trusses

2.3.1.2 Fascia frame

**2.4 Roofing Works**

**2.4.1 Installation :**

2.4.1.1 roofing sheets and accessories

2.4.1.2 Pre-painted rib type long span panel

2.4.1.3 Pre-painted G.I. False gutter

2.4.1.4 Pre-painted G.i ridge roll

2.4.1.5 Hardi SENEPA fascia board

**3.0 Architectural Works**

**3.1 Carpentry Works**

**3.1.2 Installation of:**

3.1.2.1 Installation of new Ceiling Panels and Ceiling joist w/ vent

**3.2 Masonry Works**

3.2.1 CHB wall,wall partition for kiosk1 ,2,3

3.2.2 CHB roughing (2 face)

3.2.3 Finishing Works

3.2.3.1 Wall finishing (2 face)

**3.3 Tile Works**

**3.3.1 Installation :**

3.3.2 Polished Tile Finish (color black CTF1-60 cm x180 cmx2cm Polished Tile Finish ) (sink counter top only)

**3.4 Painting Works**

**3.4.1 Surface preparation and top coating of:**

3.4.1.1 Ceiling Panels

3.4.1.2 Interior and Exterior Walls (3 coats) (whole area)

- 3.4.1.3 columns,post
- 3.4.1.4 Doors (natural finished)
- 3.4.1.5 window sill
- 3.5 Doors and Windows**
- 3.5.1 Removal existing:**
- 3.5.1.1 Existing Doors and Windows
- 3.5.2 Installation/replacement of:**
- 3.5.2.1 Installation window 2, hardware and accessories (see detail)(materials to be provided by CHMSC)
- 3.5.2.2 replacement of two front doors, hardware and accessories(swing-out)
- 3.5.2.3 installation new panel door 2 , hardware and accessories (swing-out)

**4.0 Plumbing Works**

- 4.1 Removal of existing:**
- 4.1.1 sink and accessories
- 4.1.2 Pipes and fittings for sanitary and water lines
- 4.2 Installation of:**
- 4.2.1 sink and accessories
- 4.2.2 Pipes and fittings for sanitary and water lines
- 4.2.3 water meter

**5.0 Electrical Works**

- 5.1 Installation of new:**
- 5.1.1 Installation of new light outlet, fixtures and accessories
- 5.1.2 Installation of new convenience outlet, appliances outlet switches
- 5.1.3 Installation of new wires and cables, wiring devices
- 5.1.4 Installation of sub meter
- 5.1.5 Installation of new lightings

**6.0 Mechanical Works**

- 6.1 Installation of new:**
- 6.1.1 Exhaust Fan (wall type)

Duration: 60 Calendar Days

**BILL OF QUANTITIES - BOQ**

Item no.	Description of Works	Qty	Unit	Material Cost		Labor Cost		Total Amount
				Unit Cost	Material Sub-total Cost	Unit Cost	Labor Sub-Total Cost	Contract
<b>1.0</b>	<b>GENERAL REQUIREMENTS</b>							
1.1	Mobilization and Demobilization		lot					
1.2	Site clearing, cleaning and hauling							
1.2.1	floor fully polished /buffing		lot					
1.3	Safety Occupational Hazards		lot					
<b>1.4</b>	<b>Dismantling/Demolition Works</b>							
1.4.1	Removal of old existing							
1.4.2	old existing counter , old existing windows,white board/black board, fish health lab.		lot					
1.5	Earth works/ Backfill/excavation		lot					
	<b>Sub-total, 1.0 (General Requirements)</b>					<b>Sub-total</b>		
<b>2.0</b>	<b>STRUCTURAL WORKS</b>							
<b>2.1</b>	<b>REBARS WORKS</b>							
2.1.1	roof beam, wallfooting, column, kiosk's counter, gease trap							
2.1.2	10 mmØ x 6m DSB		lght					
2.1.3	12 mmØ x 6m DSB		lght					
2.1.4	#16 G.I. wire		kg					
	<b>Sub-total, 2.1 (REBARS WORKS)</b>			<b>Sub-total</b>		<b>Sub-total</b>		
<b>2.2</b>	<b>STEEL WORKS</b>							
2.2.1	RAFTERS, FASCIA FRAME							
2.2.2	10mmØ x 6m DSB		lght					
2.2.3	3/16" x 1 1/2" x 6m Angle bar		lght					
2.2.4	welding rod 6013		kg					
2.2.5	#16 x 2" x 6" C-purlins		lght					
2.2.6	#16 x 2" x 4" C-purlins		lght					
	<b>Sub-total, 2.2(STEEL WORKS)</b>			<b>Sub-total</b>		<b>Sub-total</b>		

2.3	<b>CONCRETING WORKS</b>						
2.3.1	roof beam, wallfooting, column, kiosk's counter, gease trap						
2.3.1.1	Portland Cement 40kgs (class A)		bgs				
2.3.1.2	fine mixing sand		cu.m				
2.3.1.3	Gravel		cu.m				
	<b>Sub-total, 2.3(CONCRETING WORKS)</b>			<b>Sub-total</b>		<b>Sub-total</b>	
2.4	<b>Forms and scaffolds</b>		lot				
	<b>Sub-total, 2.4(Form &amp; Scaffolds Form)</b>			<b>Sub-total</b>		<b>Sub-total</b>	
2.5	<b>ROOFING WORKS</b>						
2.5.1	.4mm x 1.05 Ribtype long span @ 3.00m (pre-painted)		sheets				
2.5.2	.4mm x 4'x 8" g.i false gutter(pre-painted)		lnm.				
2.5.4	2 1/2" full thread tekscrew		pc				
2.5.5	1/8" x 1" blind rivet		box				
2.5.6	1" x 18" x 8' hardi SENEPA		sheets				
2.5.7	elastomeric sealant		tube/qrt				
	<b>Sub-total, 2.5(ROOFING WORKS)</b>			<b>Sub-total</b>		<b>Sub-total</b>	
3.0	<b>ARCHITECTURAL</b>						
3.1	<b>CARPENTRY WORKS</b>						
3.1.1	3.5mm x 4' x 8' hardilite board		sheet				
3.1.2	0.5mm x 19 x 50 x5m metal furring		lgth				
3.1.3	1/8" x 1" blind rivet		box				
3.1.4	Assorted Nails		kg				
3.1.5	2 1/2" Hardi nail		kg				
3.1.6	Hacksaw blade		pcs				
	<b>Sub-total, 3.0 (Carpentry Works)</b>			<b>Sub-total</b>		<b>Sub-total</b>	
3.2	<b>MASONRY WORKS</b>						
3.2.1	CHB .40m x .10m x .20m		pc				
3.2.1	CHB Mortar class A (laying, cell, plastering)						
3.2.1.1	cement		bgs				
3.2.1.2	sand(fine)		cu.m				
3.2.1.3	10mmØ x 6m DSB		lgth				
3.2.1.4	# 16 g.i wire		kg				
	<b>Sub-total, 3.2(MASONRY WORKS)</b>			<b>Sub-total</b>		<b>Sub-total</b>	
3.3	<b>TILE WORKS</b>						
3.3.1	<b>KITCHEN COUNTER TOP WITH SPLASH BOARD FINISHED</b>						
3.3.1.1	CTF1-60 cm x180 cmx2cm Polished Tile Finish		pc				
3.3.1.2	Tile Grout		kg				
3.3.1.3	Tile Adhesive		kg				
	<b>Sub-total, 3.3, (TILE WORKS)</b>			<b>Sub-total</b>		<b>Sub-total</b>	
3.4	<b>PAINTING WORKS</b>						
3.4.1	painting materials		lot				
	<b>Sub-total, 3.4(PAINTINGWORKS)</b>			<b>Sub-total</b>		<b>Sub-total</b>	
3.5	<b>DOORS AND WINDOWS</b>						
3.5.1	D1 - (1.00m x 2.10m panel Door ) Mahogany 2"x 6" wooden jamb with clear peep glass and complete accessories		set				
3.5.2	D2 - (.60m x 2.10m panel Door ) Mahogany 2"x 6" wooden jamb and complete accessories		set				
3.5.3	W1 - (3.63m L x 1.45m H ) (see detail)		set				
	<b>Sub-total, 3.5 (DOORS &amp; WINDOWS)</b>			<b>Sub-total</b>		<b>Sub-total</b>	
4.0	<b>PLUMBING WORKS</b>						
4.1	3"Ø X3"Ø PVC sanitary Tee		pc				
4.2	4"Ø X45° PVC sanitary Elbow		pc				
4.3	4"Ø X3"Ø PVC sanitary wye		pc				
4.4	4"Ø PVC sanitary clean out plug		pc				
4.5	4"Ø sanitary coupling		pc				
4.6	4" x 4" Floor Drain		pc				
4.7	3"Ø X3.0 m sanitary pipe		lgth				



4.8	3"Ø X45° PVC sanitary Elbow		pc				
4.9	3"Ø PVC p-trap		pc				
4.2	<b>WATER SUPPLY LINE</b>						
4.2.1	1"Ø Black Pe pipe		mts				
4.2.2	1/2"Ø X3.0 m pvc Blue-pipe		lghts				
4.2.3	1/2"Ø X 90° pvc Elbow-pipe		lghts				
4.2.4	1/2"Ø pvc Tee-Blue		pc				
4.2.5	1"Ø X 1/2"Ø P.E. Pipe Black Fittings Reducer		pc				
4.2.6	1" Ø Pe compression fittings valve		pc				
4.2.7	Solvent cement-400 cc		cans				
4.2.8	Tapellon 1/2"		pcs				
4.2.9	Sealant		qrt				
4.2.10	heavy duty water meter		set				
4.3	<b>PLUMBING FIXTURES</b>						
4.3.1	kitchen sink with complete accessories		units				
	<b>Sub-total, 4.0(PLUMBING WORKS)</b>			<b>Sub-total</b>		<b>Sub-total</b>	
5.0	<b>ELECTRICAL WORKS</b>						
5.1	2-gang switch		set				
5.2	3.5mm² THHN/THWN wire		roll				
5.3	2-Flourescent Lamp T8 LED Tube 32 watts w/ Aluminum Reflector		set				
5.4	5.5mm² THHN/THWN wire		roll				
5.5	1" dia. RSC pipe		lgth				
5.6	30 mm2 THW Cu wire		mts.				
5.7	Grounding Rod 1 Meters x 5/8 with Grounding Clamp 5/8 ( Copper Plated)		set				
5.8	Junction box		pc				
5.9	Utility box		pc				
5.10	Electrical tape (big)		pc				
5.11	Duplex conv. Outlet w/ weather proof Universal		pc				
5.12	Duplex conv. Outlet Universal (3-prong) GFCI		pc				
5.13	Rigid Steel Conduit RSC Entrance Cap 1"		pc				
5.14	Circuit Breaker Panel Board 60 A Bolt on center main w/ 1-20 A & 4-30 A Plug-in Type		pc				
5.15	GE Digital Watthour Meter / Metro / Submeter Model I-210 Single Phase 60Amps (Calibrated)		set				
5.16	20mm dia. x 3m Pvc conduit		lght				
5.17	2.0mm² THHN wire		roll				
	<b>Sub-total, 5.0 (ELECTRICAL WORKS)</b>			<b>Sub-total</b>		<b>Sub-total</b>	
6.0	<b>MECHANICAL WORKS</b>						
6.1	Exhaust Fan (wall type)		pc				
	<b>Sub-total, 6.0 (MECHANICALL WORKS)</b>			<b>Sub-total</b>		<b>Sub-total</b>	
7.0	<b>MISCELLANEOUS WORKS</b>						
	FOR ALL OTHER ITEMS that are not included on listed Bill of Quantities in your Bid but tare deemed necessary for the completion of the works and the delivery of the project and in full compliance with all the requirements of the occupancy permit.		lot				
	<b>Sub-total,7.0 (MISCELLANEOUS WORKS)</b>			<b>Sub-total</b>		<b>Sub-total</b>	
<b>A. TOTAL DIRECT COST</b> <b>B. Consumables</b> <b>C. Supervision and Administration</b> <b>D.Total Indirect Cost(B + C)</b> <b>E.Total Cost(A + D)</b> <b>F. VAT (12 % of Item E)</b> <b>GRAND TOTAL OF PROJECT COST</b>							

through an agent shall not engage in corrupt, fraudulent, collusive, coercive, and obstructive practices defined under Annex "I" of the 2016 revised IRR of RA No. 9184 or other integrity violations in competing for the Project.

## 5. Eligible Bidders

- 5.1. Only Bids of Bidders found to be legally, technically, and financially capable will be evaluated.
- 5.2. The Bidder must have an experience of having completed a Single Largest Completed Contract (SLCC) that is similar to this Project, equivalent to at least fifty percent (50%) of the ABC adjusted, if necessary, by the Bidder to current prices using the PSA's CPI, except under conditions provided for in Section 23.4.2.4 of the 2016 revised IRR of RA No. 9184.

A contract is considered to be "similar" to the contract to be bid if it has the major categories of work stated in the **BDS**.

- 5.3. For Foreign-funded Procurement, the Procuring Entity and the foreign government/foreign or international financing institution may agree on another track record requirement, as specified in the Bidding Document prepared for this purpose.
- 5.4. The Bidders shall comply with the eligibility criteria under Section 23.4.2 of the 2016 IRR of RA No. 9184.

## 6. Origin of Associated Goods

There is no restriction on the origin of Goods other than those prohibited by a decision of the UN Security Council taken under Chapter VII of the Charter of the UN.

## 7. Subcontracts

- 7.1. The Bidder may subcontract portions of the Project to the extent allowed by the Procuring Entity as stated herein, but in no case more than fifty percent (50%) of the Project.

The Procuring Entity has prescribed that:

- a. Subcontracting is allowed. The portions of Project and the maximum percentage allowed to be subcontracted are indicated in the **BDS**, which shall not exceed fifty percent (50%) of the contracted Works.

- 7.1. The Bidder must submit together with its Bid the documentary requirements of the subcontractor(s) complying with the eligibility criterion stated in **ITB** Clause 5 in accordance with Section 23.4 of the 2016 revised IRR of RA No. 9184 pursuant to Section 23.1 thereof.
- 7.2. The Supplier may identify its subcontractor during the contract implementation stage. Subcontractors identified during the bidding may be changed during the

implementation of this Contract. Subcontractors must submit the documentary requirements under Section 23.1 of the 2016 revised IRR of RA No. 9184 and comply with the eligibility criteria specified in **ITB** Clause 5 to the implementing or end-user unit.

- 7.3. Subcontracting of any portion of the Project does not relieve the Contractor of any liability or obligation under the Contract. The Supplier will be responsible for the acts, defaults, and negligence of any subcontractor, its agents, servants, or workmen as fully as if these were the Contractor's own acts, defaults, or negligence, or those of its agents, servants, or workmen.

## **8. Pre-Bid Conference**

The Procuring Entity will hold a pre-bid conference for this Project on the specified date and time and either at its physical address **Bidding Room, 2/F Supply and Property Management Bldg., Brgy. Zone 1, Mabini St., Talisay City, Negros Occidental** or through **Zoom Meeting ID No. 797 389 7583 Meeting Password 080922** as indicated in paragraph 6 of the **IB**.

## **9. Clarification and Amendment of Bidding Documents**

Prospective bidders may request for clarification on and/or interpretation of any part of the Bidding Documents. Such requests must be in writing and received by the Procuring Entity, either at its given address or through electronic mail indicated in the **IB**, at least ten (10) calendar days before the deadline set for the submission and receipt of Bids.

## **10. Documents Comprising the Bid: Eligibility and Technical Components**

- 10.1. The first envelope shall contain the eligibility and technical documents of the Bid as specified in **Section IX. Checklist of Technical and Financial Documents**.
- 10.2. If the eligibility requirements or statements, the bids, and all other documents for submission to the BAC are in foreign language other than English, it must be accompanied by a translation in English, which shall be authenticated by the appropriate Philippine foreign service establishment, post, or the equivalent office having jurisdiction over the foreign bidder's affairs in the Philippines. For Contracting Parties to the Apostille Convention, only the translated documents shall be authenticated through an apostille pursuant to GPPB Resolution No. 13-2019 dated 23 May 2019. The English translation shall govern, for purposes of interpretation of the bid.
- 10.3. A valid PCAB License is required, and in case of joint ventures, a valid special PCAB License, and registration for the type and cost of the contract for this Project. Any additional type of Contractor license or permit shall be indicated in the **BDS**.

- 10.4. A List of Contractor's key personnel (e.g., Project Manager, Project Engineers, Materials Engineers, and Foremen) assigned to the contract to be bid, with their complete qualification and experience data shall be provided. These key personnel must meet the required minimum years of experience set in the **BDS**.
- 10.5. A List of Contractor's major equipment units, which are owned, leased, and/or under purchase agreements, supported by proof of ownership, certification of availability of equipment from the equipment lessor/vendor for the duration of the project, as the case may be, must meet the minimum requirements for the contract set in the **BDS**.

## **11. Documents Comprising the Bid: Financial Component**

- 11.1. The second bid envelope shall contain the financial documents for the Bid as specified in **Section IX. Checklist of Technical and Financial Documents**.
- 11.2. Any bid exceeding the ABC indicated in paragraph 1 of the **IB** shall not be accepted.
- 11.3. For Foreign-funded procurement, a ceiling may be applied to bid prices provided the conditions are met under Section 31.2 of the 2016 revised IRR of RA No. 9184.

## **12. Alternative Bids**

Bidders shall submit offers that comply with the requirements of the Bidding Documents, including the basic technical design as indicated in the drawings and specifications. Unless there is a value engineering clause in the **BDS**, alternative Bids shall not be accepted.

## **13. Bid Prices**

All bid prices for the given scope of work in the Project as awarded shall be considered as fixed prices, and therefore not subject to price escalation during contract implementation, except under extraordinary circumstances as determined by the NEDA and approved by the GPPB pursuant to the revised Guidelines for Contract Price Escalation guidelines.

## **14. Bid and Payment Currencies**

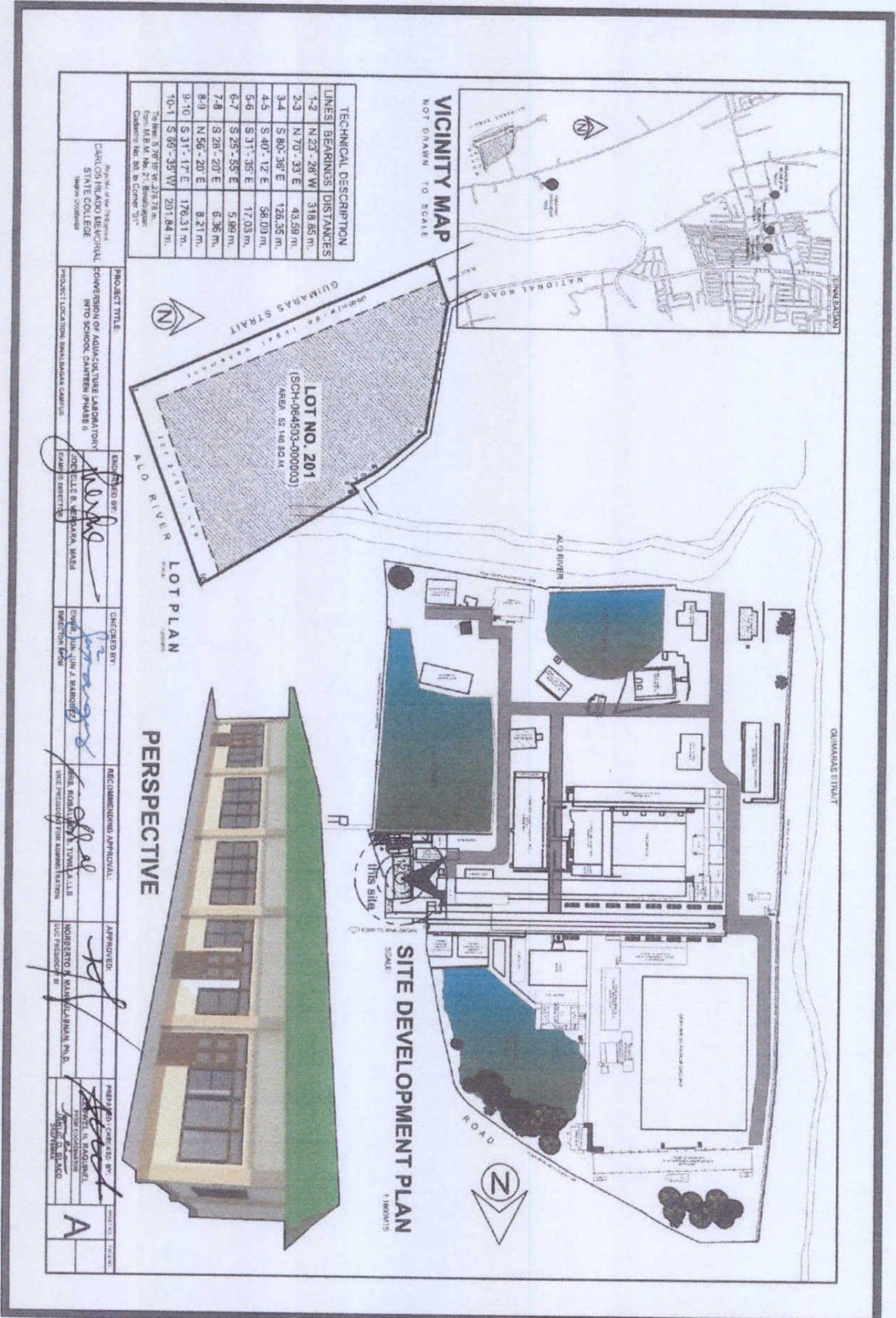
- 14.1. Bid prices may be quoted in the local currency or tradeable currency accepted by the BSP at the discretion of the Bidder. However, for purposes of bid evaluation, Bids denominated in foreign currencies shall be converted to Philippine currency based on the exchange rate as published in the BSP reference rate bulletin on the day of the bid opening.
- 14.2. *Payment of the contract price shall be made in:*

- a. Philippine Pesos.

PPDM BINARAGAN  
 RELEASED BY:  
*Eilra*  
 BLACD *JAYUE O.*  
 06/12/2022, 3:00PM

RECEIVED BY:  
 06/13/2022

Revised Checked



3RD REVISION / REVISED 06/12/2022

PROJECT TITLE: DEPARTMENT OF AGRICULTURE LABORATORY CONVERSION INTO SCHOOL CAMPUS (PHASE II)	ENGINEERED BY: <i>[Signature]</i> ENGR. JAYUE O. BLACD, RAJA CIVIL ENGINEER	CHECKED BY: <i>[Signature]</i> ENGR. JAYUE O. BLACD, RAJA CIVIL ENGINEER	RECOMMENDING APPROVAL: <i>[Signature]</i> MR. ROBERTO A. TAYAN, A.L.S. VICE PRESIDENT FOR ADMINISTRATION	APPROVED: <i>[Signature]</i> MR. ROBERTO A. TAYAN, A.L.S. VICE PRESIDENT FOR ADMINISTRATION	REGISTERED ARCHITECT: <i>[Signature]</i> ENR. JAYUE O. BLACD, RAJA REGISTERED ARCHITECT
PROJECT LOCATION: BANGALAYAN CAMPUS					
DATE OF PRELIMINARY DESIGN: 06/12/2022					
DATE OF REVISION: 06/12/2022					

A



REG. NO. 177  
 CARLOS HILADO MEMORIAL  
 STATE COLLEGE  
 Tagaytay, Cavite

PROJECT TITLE  
 CONVERSION OF AQUACULTURE LABORATORY  
 INTO SCHOOL CANTEN PHASE II  
 PROJECT LOCATION: NAVAL ROAD CAMPUS  
 CAVITE CITY

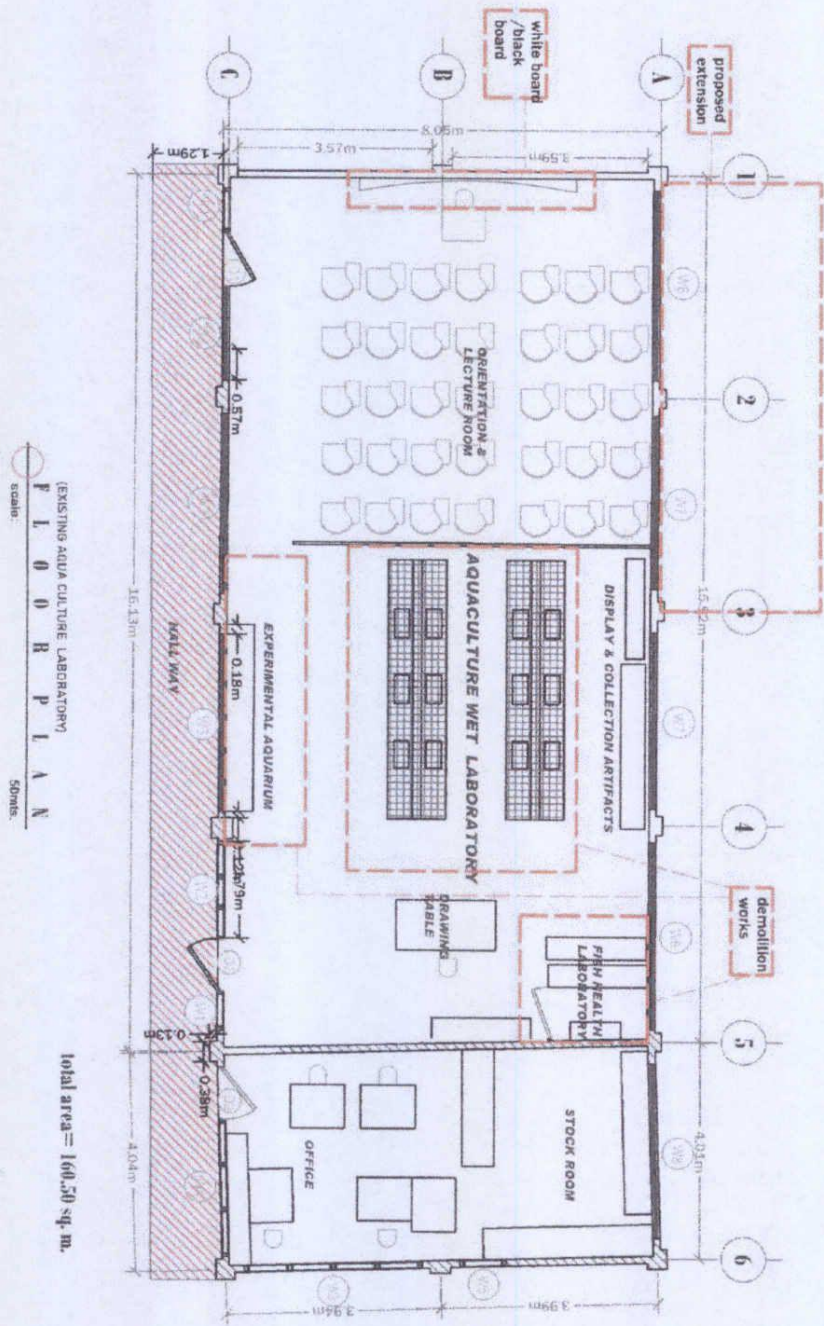
DESIGNED BY  
 [Signature]  
 CHECKED BY  
 [Signature]

RECOMMENDING APPROVAL  
 [Signature]  
 [Signature]

APPROVED  
 [Signature]

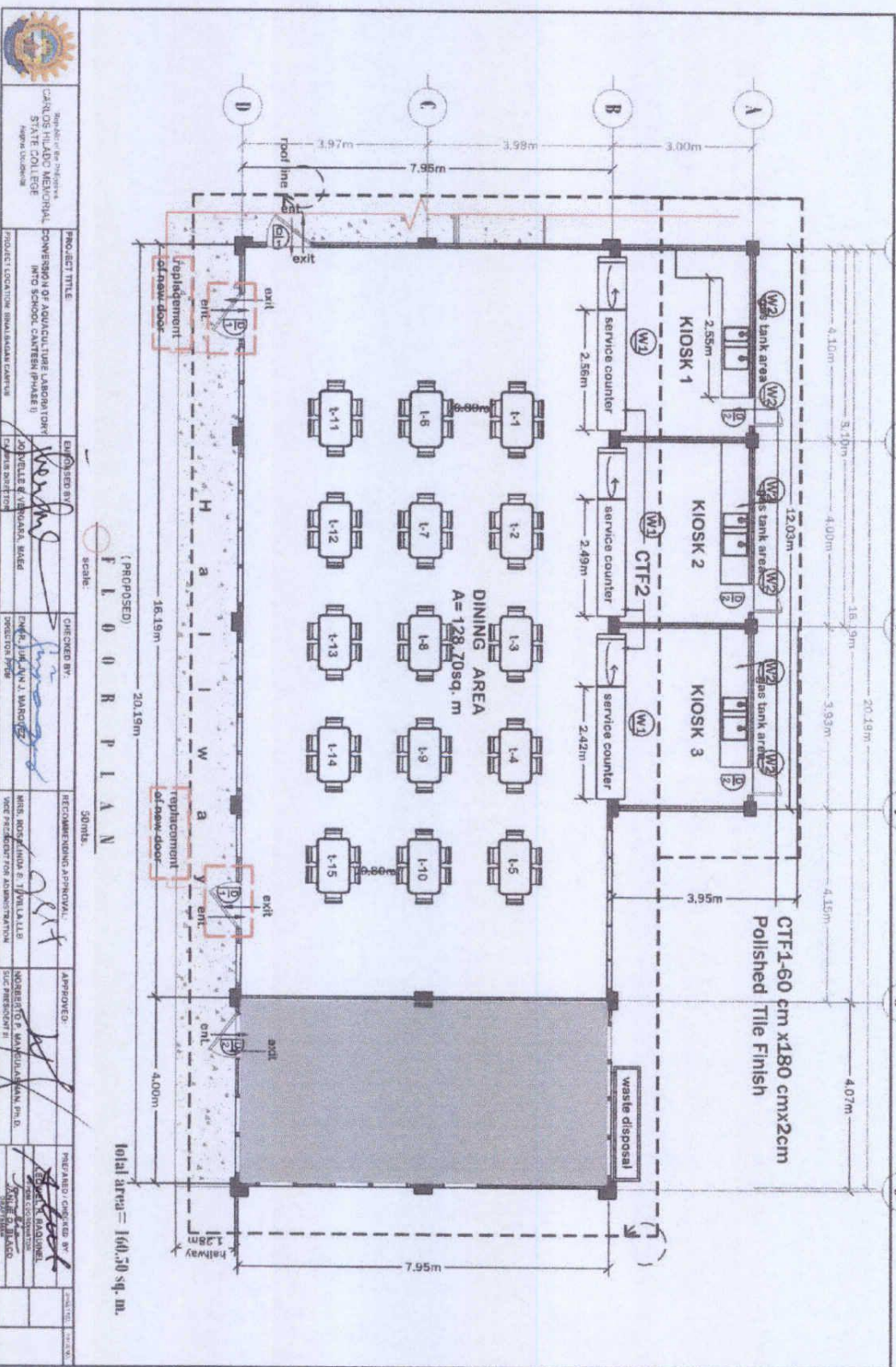
CHECKED BY  
 [Signature]

[Signature]



(EXISTING AQUA CULTURE LABORATORY)  
 P L O O R P L A N  
 Scale: 50m/s

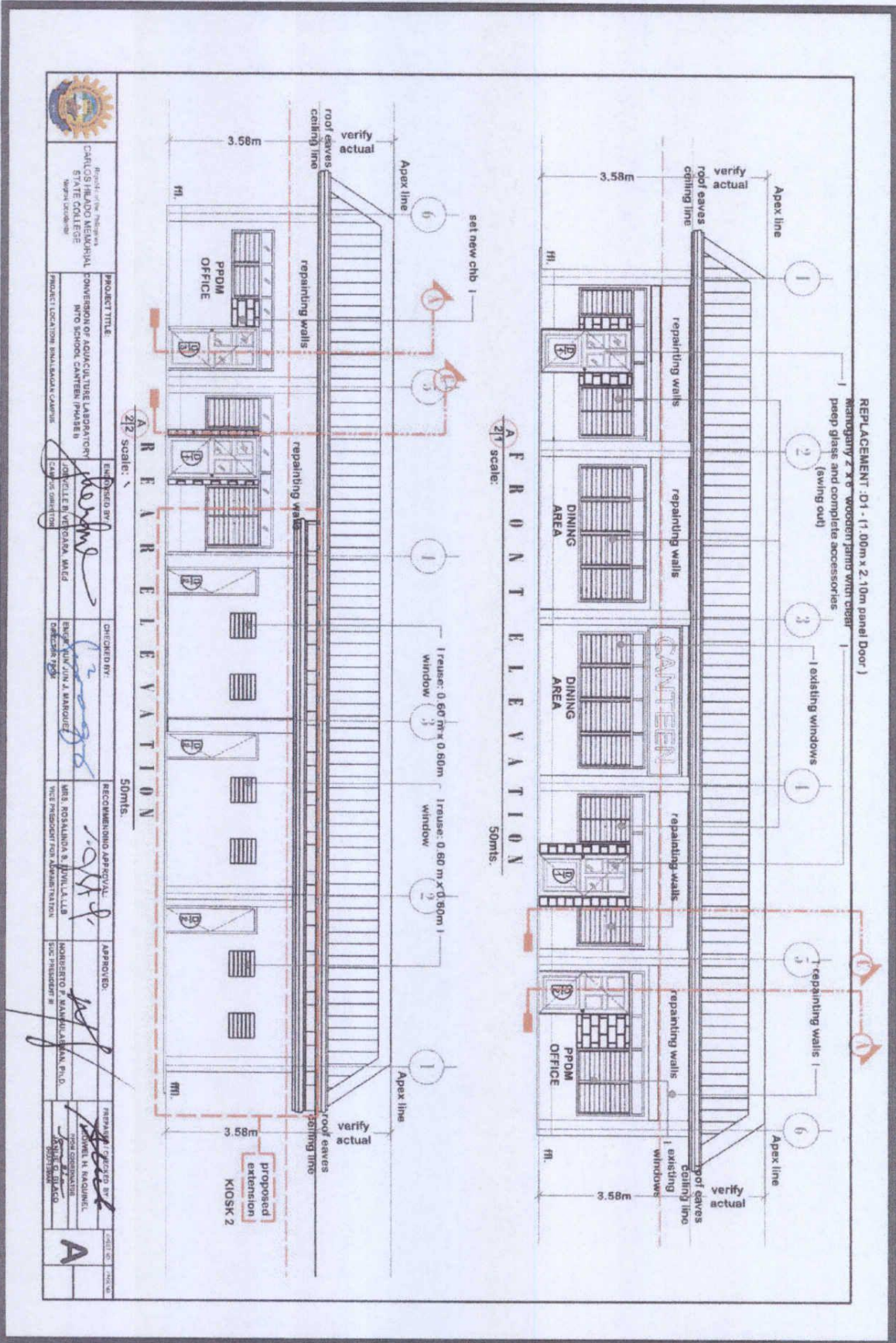
Total area = 160.50 sq. m.




	PROJECT TITLE CONVERSION OF AGRICULTURE LABORATORY INTO SCHOOL CANTEN (PHASE 1)	ENGINEER BY 	CHECKED BY 	RECOMMENDING APPROVAL 	APPROVED 	PREPARED / CHECKED BY 
	PROJECT LOCATION: IBAK BAHAY BARBERS	SUPERVISOR 	DATE: JANUARY 21, 2018	SITE, NO. OF FLOORS & WALLS 	NO. OF STUDENTS 	NO. OF STUDENTS 

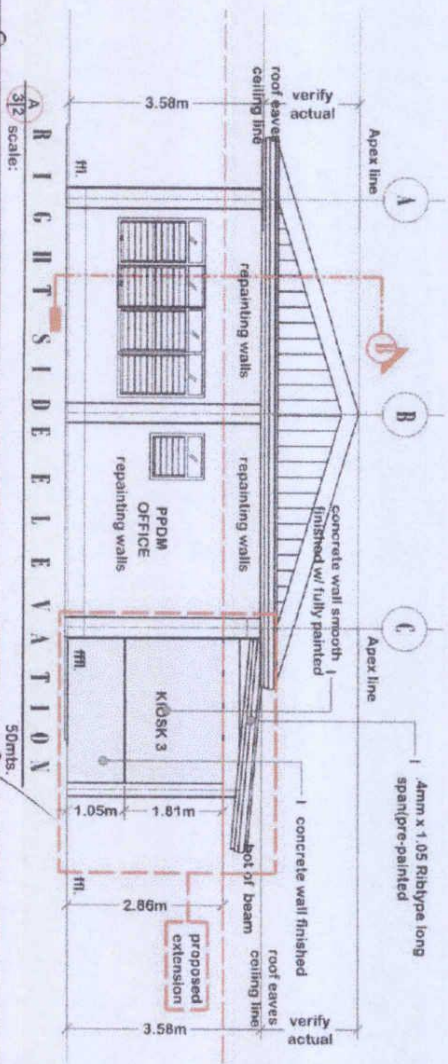
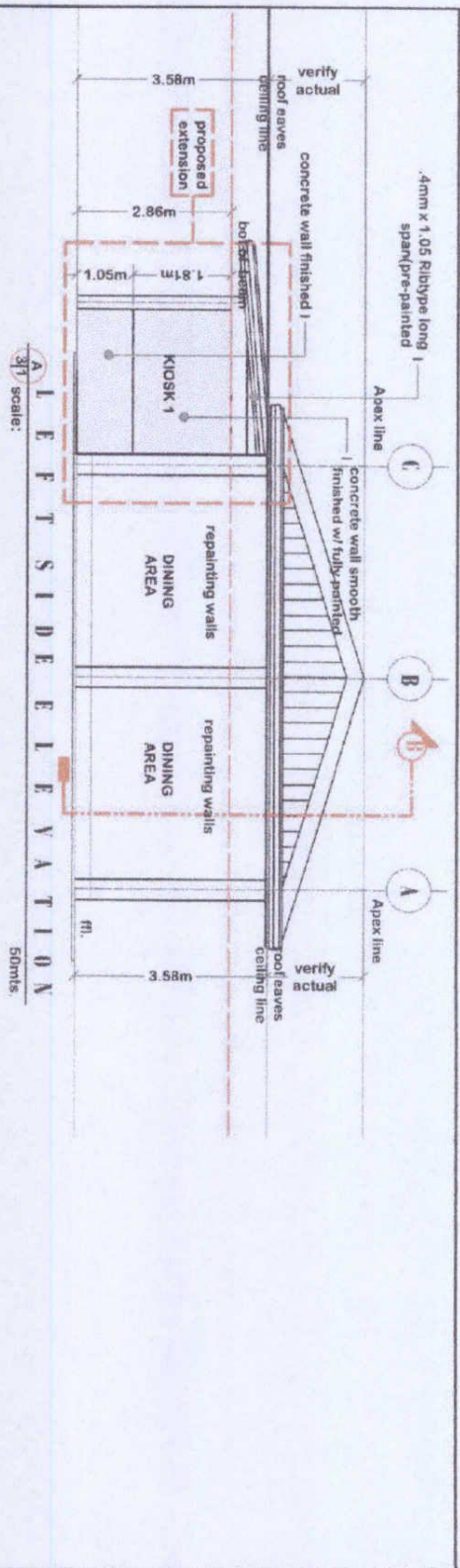
(PROPOSED)  
 FLOOR PLAN  
 SCALE: 30mm

total area = 160.50 sq. m.



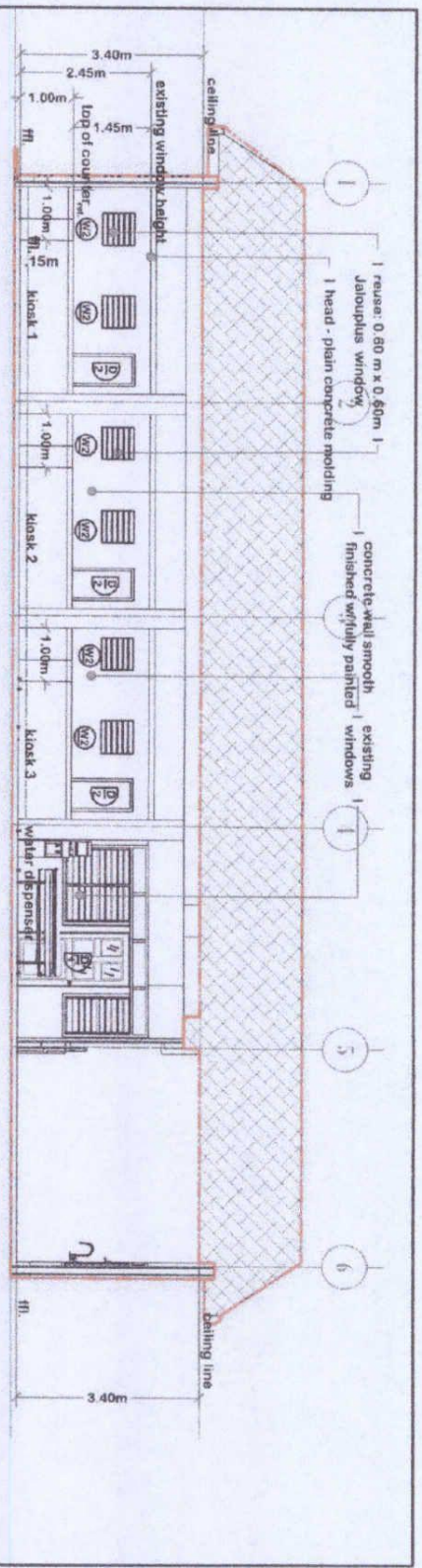
 Republic of the Philippines <b>CARLOS HILADO MEMORIAL STATE COLLEGE</b> Negros Occidental	PROJECT TITLE: <b>COMMISSION OF AGRICULTURE LABORATORY INTO SCHOOL CANTEN (PHASE II)</b>	ENGINEERED BY: <i>[Signature]</i> <b>JOHN RILEY VERONICA WILCO</b> CADS CONSULTANT	CHECKED BY: <i>[Signature]</i> <b>ENGR. JIM J. BARBERE</b> CONSULTANT	RECOMMENDING AGENCY: <b>MRS. ROSALINDA S. JUVILLAN</b> VICE PRESIDENT FOR ADMINISTRATION	APPROVED: <i>[Signature]</i> <b>HONORBERTO P. MANALO, JR., D.</b> SIC PRESIDENT	DESIGNED BY: <i>[Signature]</i> <b>JOHN H. MAGUIBUL</b> SIC PRESIDENT	<b>A</b>
	PROJECT LOCATION: <b>SHALAMUN CAMPUS</b>	PROJECT NO.:	DATE:	SCALE:	DATE:	DATE:	





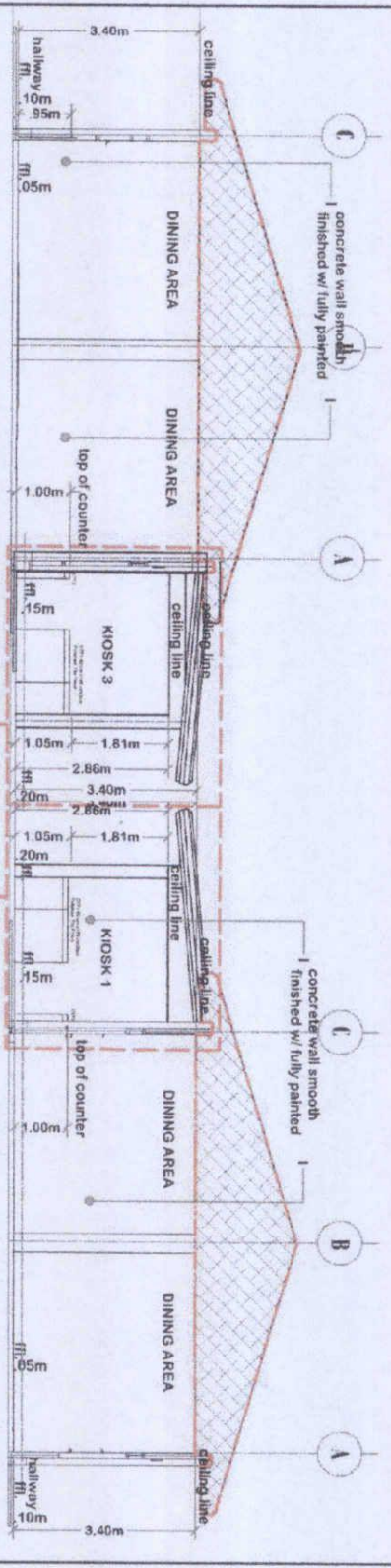
 Republic of the Philippines <b>CARLOS HILADO MEMORIAL STATE COLLEGE</b> Iloilo City	PROJECT TITLE:	ENGINEERED BY:	CHECKED BY:	RECOMMENDING AGENCIES:	APPROVED:	HEARDO, DIRECTOR, JR.:
	CONVERSION OF AGRICULTURE LABORATORY INTO SCHOOL CANTEN PHASE 0	JOYVIN J. MARQUEZ	JOYVIN J. MARQUEZ	MRS. NORMAN TAVEL, LLB	MONITORING MANOJ, SHAM P.N.O.	JOYVIN J. MARQUEZ
PROJECT LOCATION: BINALAGAN CAMPUS	DATE: 08/08/2024	DATE: 08/08/2024	DATE: 08/08/2024	DATE: 08/08/2024	DATE: 08/08/2024	DATE: 08/08/2024

**A**



A S E C T I O N T H R U " B - B "

4/2 scale: 50mts.



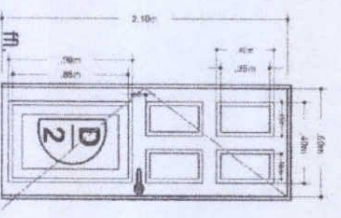
A S E C T I O N T H R U " A - A "

4/2 scale: 50mts.

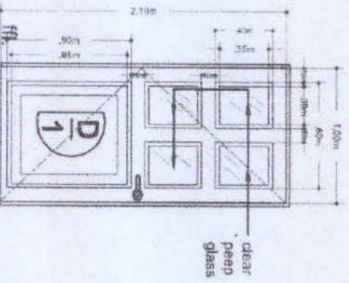
<p>UNIVERSITY OF THE PHILIPPINES LOS BAÑOS STATE COLLEGE Naga, Laguna</p>	PROJECT TITLE:	EMPLOYED BY:	CHECKED BY:	RECOMMENDING AGENCY:	APPROVED:	REMARKS:
	CONVERSION OF ANATOMICAL LABORATORY INTO SCHOOL CANTEN (PHASE I)	COLETTA B. VESGANA BAÑOS CLASS OF 2017	ENR. JUAN J. MANORANG INSPECTION ENGINEER	DR. ROSA LUISA S. TRIVILLALLES VICE PRESIDENT FOR ADMINISTRATION	ROBERTO P. MANCILLAN, P.L.C. VICE PRESIDENT	
PROJECT LOCATION: BINALAGAN CAMPUS						2ND REVISION CHECKED BY:  DATE: 03/01/2022

### SCHEDULE OF DOORS

MARK	WIDTH	HEIGHT	SETS	JAMB
D1	1.00m	2.10m	2	WOOD
D2	0.60m	2.10m	3	WOOD
D3	1.00m	1.00m	3	WOOD



D2 - .80 m x 2.10 Mahogany 2"x6" wooden jamb with complete accessories (swing out)  
**DOOR 2**  
 LOCATION: Block 1, 2, 3



D1 - (1.00m x 2.10m panel Door) Mahogany 2"x6" wooden jamb with clear peep glass and complete accessories (swing out)  
**DOOR 1**  
 LOCATION: Dining entrance and exit



D3 - 1.00 m x 1.00 Mahogany wooden jamb with complete accessories (swing out- swing in)  
**DOOR 3**  
 LOCATION: Block 1, 2, 3, service dunnier

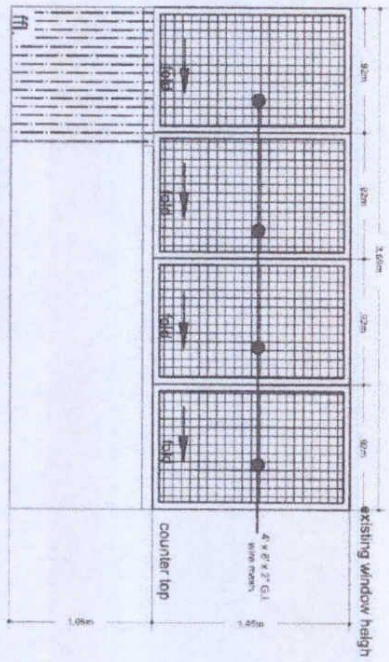
### A SCHEDULE OF DOORS

5/1 scale: 20mts.

Prepared by: Checked by: Recommended Approval: Approved: Prepared by: Checked by: Recommended Approval: Approved:	PROJECT TITLE: CONVERSION OF AQUACULTURE LABORATORY AND SCHOOL CANTEN PHASE B	PROJECT LOCATION: CAROLINA MEMORIAL STATE COLLEGE	PROJECT DRAWING NUMBER: 1.2.3	DATE: 1/27/20
--	--	--	----------------------------------	---------------

### SCHEDULE OF WINDOWS

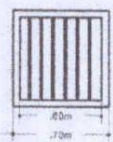
MARK	WIDTH	HEIGHT	SETS	DESCRIPTION
W1	3.96m	1.45m	2	W1- 3.96 m x 1.45 x 2'G1 wire mesh folding/accordion window on aluminum frame
W2	0.70m	0.70m	6	W2- 70 m x 70 Jalouplus window on aluminum frame



W1- 3.96 m x 1.45 x 2'G1 wire mesh folding/accordion window on aluminum frame

**WINDOW 1**

LOCATION: Kiosk 1, 2, 3 (service counter)



D2- 70 m x 70 Jalouplus window on aluminum frame

**WINDOW 2**

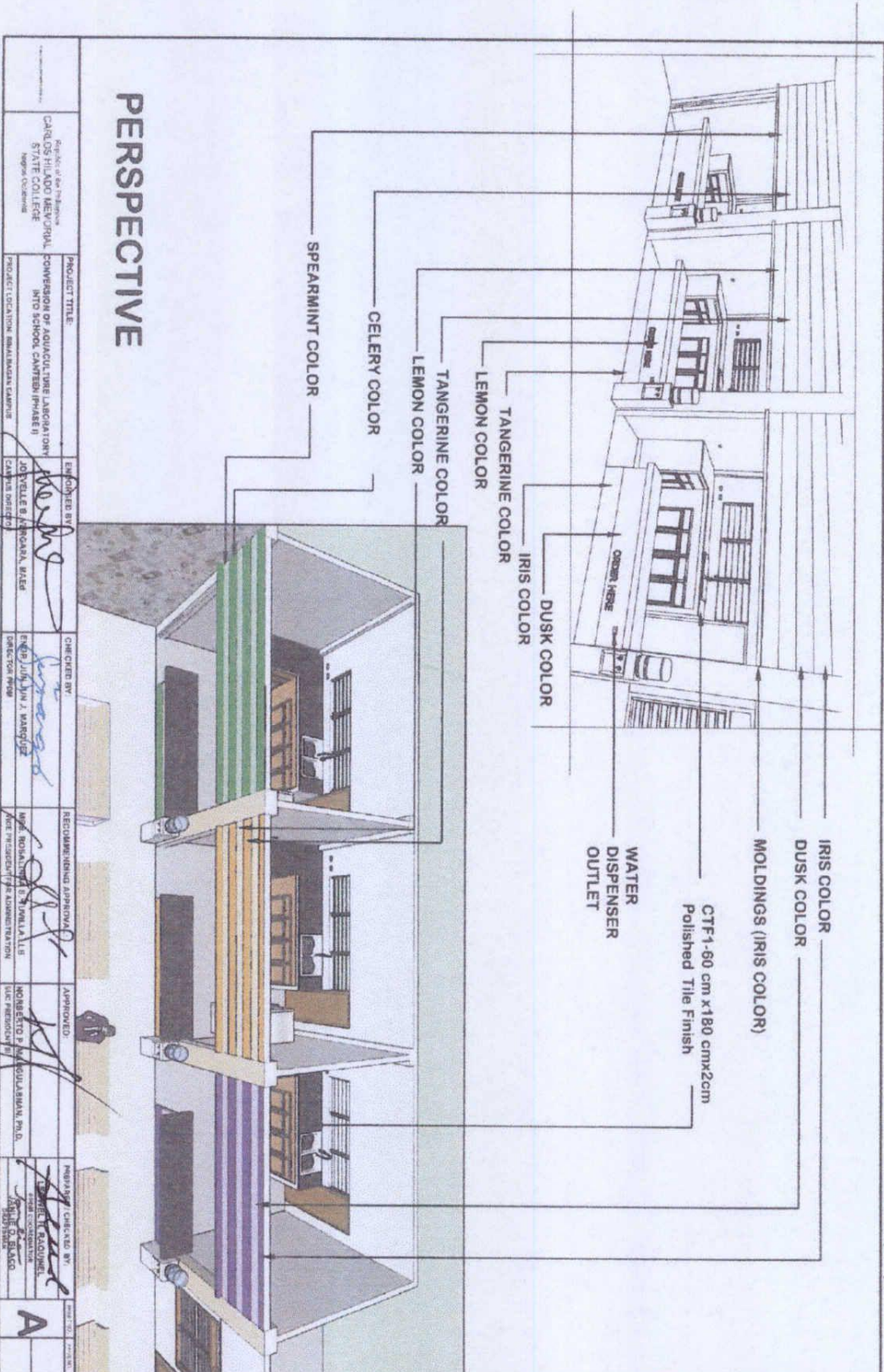
LOCATION: Kiosk 1, 2, 3

### SCHEDULE OF DOORS

scale: 20mts.

CLIENT: CARLOS HILADO MEMORIAL STATE COLLEGE ADDRESS: Marikina City, Marikina	PROJECT TITLE: CONVERSION OF AQUACULTURE LABORATORY INTO SCHOOL CATERING PHASE II PROJECT LOCATION: SMALAMAKAN CAMPUS	ENGINEER BY: [Signature] CHECKED BY: [Signature] RECOMMENDED APPROVAL: [Signature] APPROVED: [Signature]	DATE: 11/20/2018
--	--	---	------------------

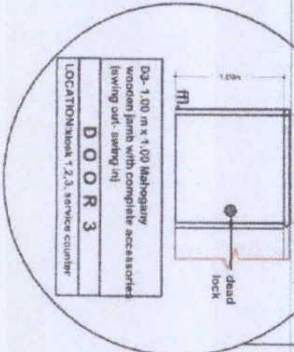
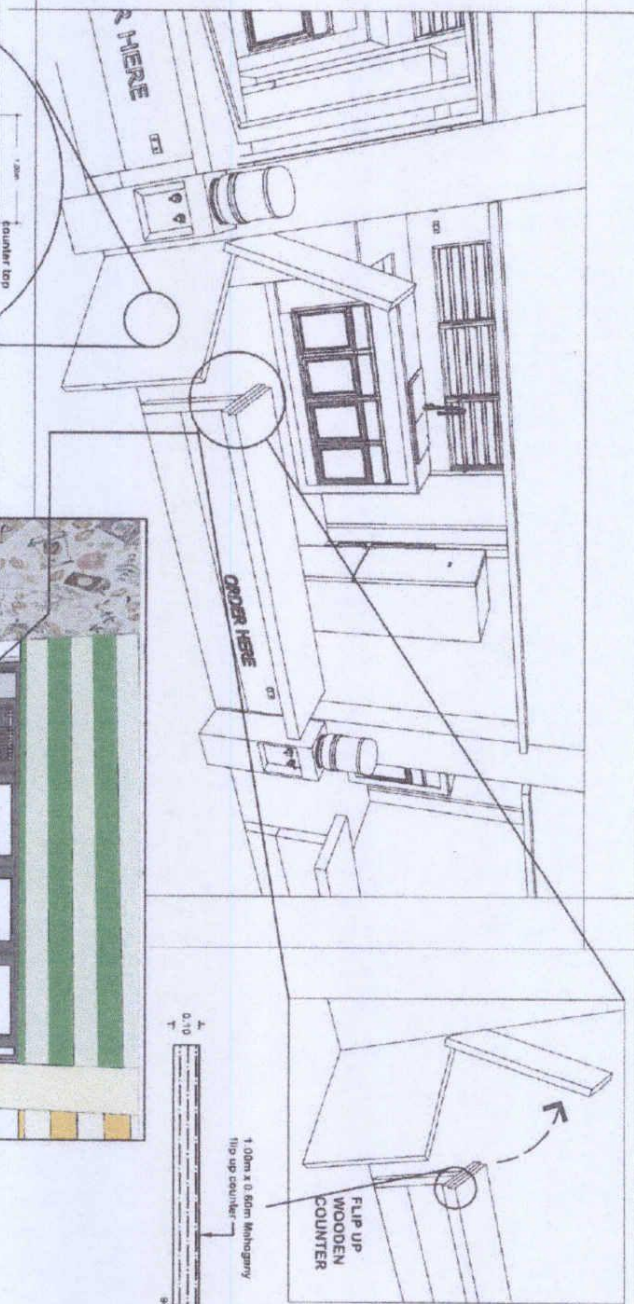
# KIOSK 1,2,3



## PERSPECTIVE

Republic of the Philippines <b>CARLOS HILADO MENDOZA</b> STATE COLLEGE Negros Occidental	
<b>PROJECT TITLE</b> CONVERSION OF AQUACULTURE LABORATORY INTO SCHOOL CANTINA PHASE II	<b>EMPLOYED BY</b> JOYCELLE B. ANOANAN, MAEd CAMPUS DIRECTOR
<b>PROJECT LOCATION</b> MALABALAN CAMPUS	<b>CHEF BY</b> JEFF JUAN A. BANGGAY INSPECTOR NEW
<b>REQUIREMENTS APPROVAL</b> MR. ROBERTO S. YINELA LUIS VICE PRESIDENT FOR ADMINISTRATION	<b>APPROVED</b> MONSIEUR P. M. KOUUSMAN PH.D. VICE PRESIDENT
<b>PREPARED BY</b> ANGEL T. BANGGAY ARCHITECT	<b>DATE</b> 2018

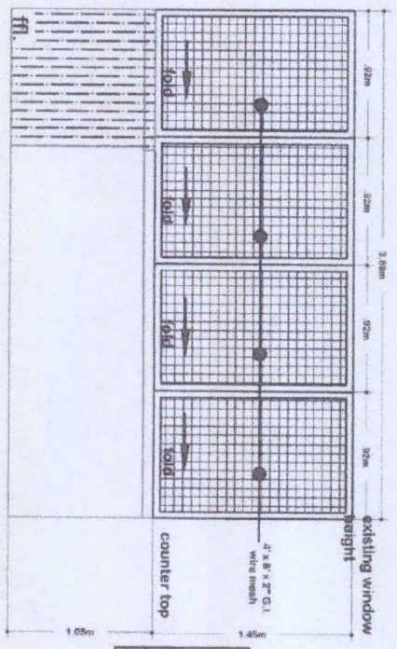
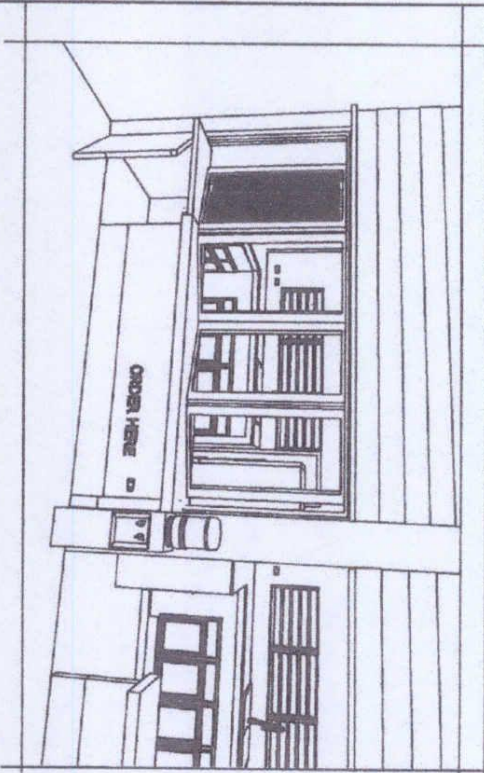
**A**



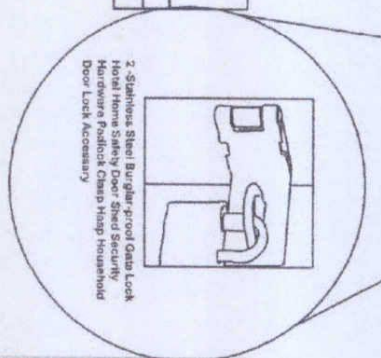
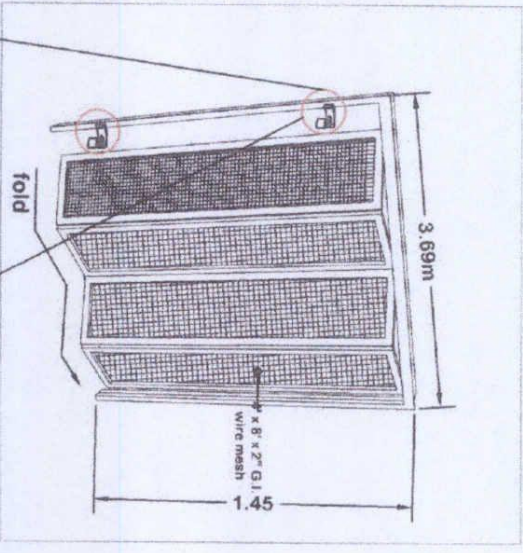
**DOOR 3 & FLIP UP COUNTER DETAIL**

<p>Head of the Division <b>CARLOS PALADO MEMORIAL STATE COLLEGE</b> Moggi, Davao</p>	<p>PROJECT TITLE <b>CONVERSION OF AQUACULTURE LABORATORY INTO SCHOOL CANTEN (PHASE II)</b> PROJECT LOCATION: BALABAKAN CAMPUS</p>	<p>DESIGNED BY: <i>[Signature]</i> <b>JOSE LILIE P. VICTORIN BAÑO</b> CADRE DIRECTOR</p>	<p>CHECKED BY: <i>[Signature]</i> <b>EDGAR J. JUAN J. MARCOS</b> PROJECT ENGINEER</p>	<p>RECOMMENDING APPROV: <i>[Signature]</i> <b>WEN ROSALIND S. TIVIELA LLIB</b> VICE PRESIDENT FOR ADMINISTRATION</p>	<p>APPROVED: <i>[Signature]</i> <b>ROBERTO P. MANAO</b> SIC PRESIDENT</p>	<p>REMARKS / OBSERVED BY: <i>[Signature]</i> <b>ANGEL A. SAGUR</b> SIC PRESIDENT</p>
--	---	--	---	--	---	--

**A**



W1- 3.69 m x 1.45 x 2" G.I. wire mesh folding/Accordion window on aluminum frame  
**WINDOW 1**  
 LOCATION: Kiosk 1, 2, 3 (service counter)



REPUBLIC OF THE PHILIPPINES CARLOS HILADO MEMORIAL STATE COLLEGE Region - Ilocos Norte	PROJECT TITLE: CONVERSION OF AQUACULTURE LABORATORY INTO SCHOOL CANTEN (PHASE II)	CHECKED BY: Engr. J. J. MARQUEZ DIRECTOR OF THE COLLEGE OF ENGINEERING	RECOMMENDING APPROVAL: Engr. R. C. ALONSO CHIEF ENGINEER	APPROVED: Engr. R. C. ALONSO CHIEF ENGINEER	REVISIONS: 1. REVISED BY: [Signature] 2. REVISED BY: [Signature]
PROJECT LOCATION: MALABALAN CAMPUS CAMPUS DIRECTOR: [Signature]	ENGINEERED BY: Engr. J. J. MARQUEZ DIRECTOR OF THE COLLEGE OF ENGINEERING	CHECKED BY: Engr. J. J. MARQUEZ DIRECTOR OF THE COLLEGE OF ENGINEERING	RECOMMENDING APPROVAL: Engr. R. C. ALONSO CHIEF ENGINEER	APPROVED: Engr. R. C. ALONSO CHIEF ENGINEER	REVISIONS: 1. REVISED BY: [Signature] 2. REVISED BY: [Signature]

**A**



State of the Philippines  
**CARLOS HILADO MEMORIAL STATE COLLEGE**  
 Negros Occidental

**PROJECT TITLE:**  
 CONVERSION OF AQUACULTURE LABORATORY INTO SCHOOL CANTEN (PHASE II)

**DESIGNED BY:**  
 JAYVELLE B. VESODAN, MIED  
 CIVIL ENGINEER

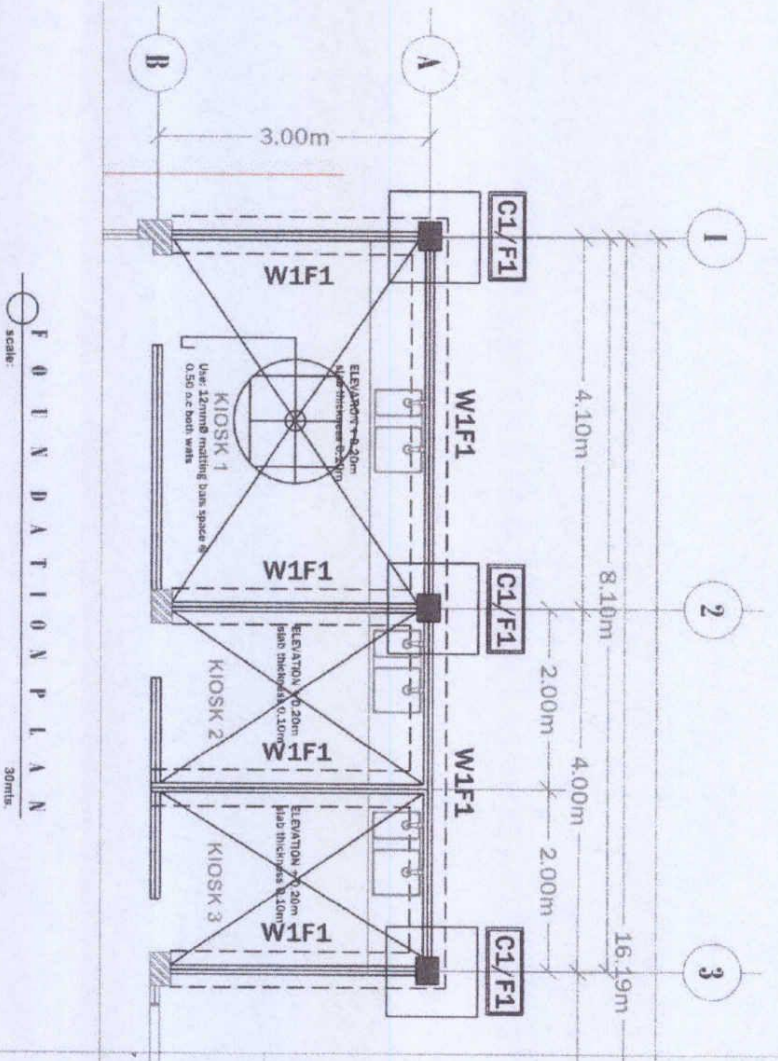
**CHECKED BY:**  
 ERIC J. MANORIT  
 STRUCTURAL ENGINEER

**RECOMMENDING APPROVAL:**  
 SRS. ROYALINDO B. TIVALLALLA  
 CIVIL ENGINEER (REGISTERED)

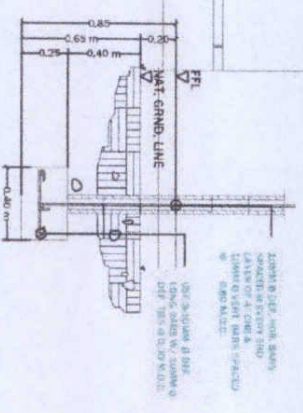
**APPROVED:**  
 ROBERTO P. VARGAS, BSAW, P.L.C.  
 CIVIL ENGINEER

**PREPARED / CHECKED BY:**  
 JAYVELLE B. VESODAN, MIED  
 CIVIL ENGINEER

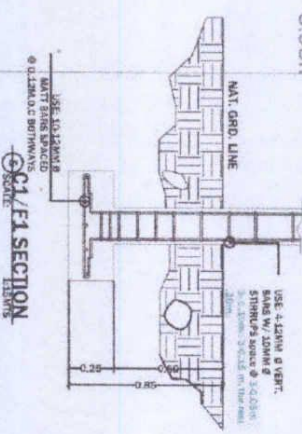
**DATE:**  
 11/15/2018



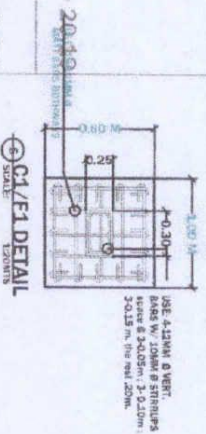
**FOOTING PLAN**  
 scale: 30mbs



**W1F1 SECTION**  
 SCALE: 1:20MBS

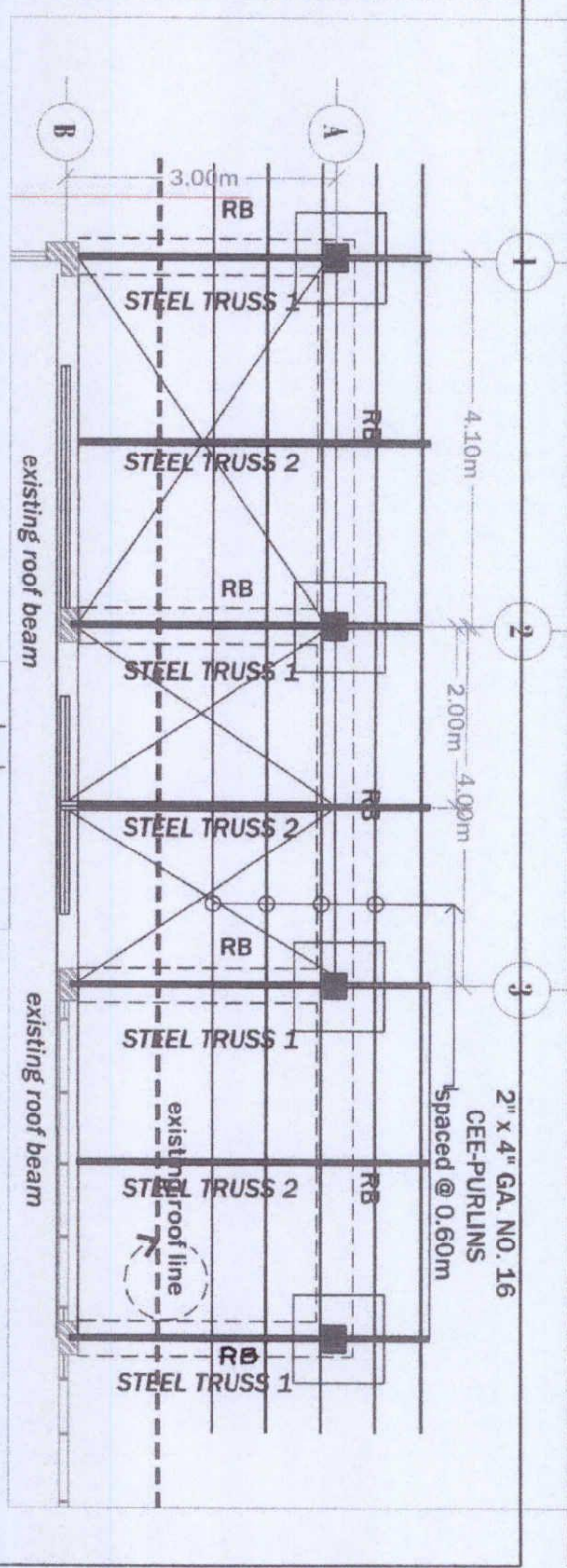


**C1/F1 SECTION**  
 SCALE: 1:20MBS

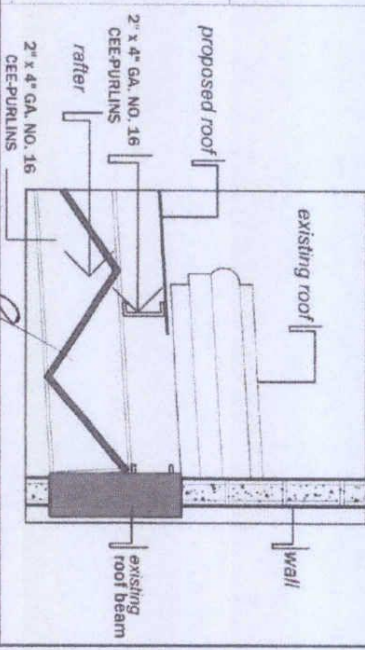
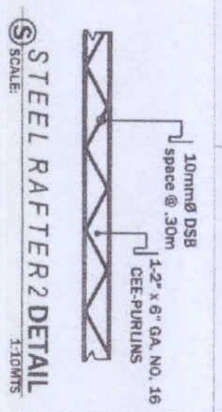
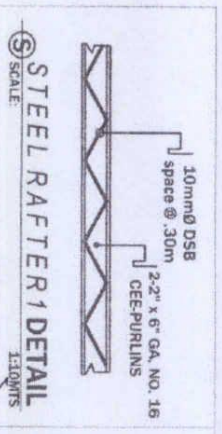
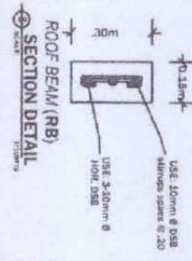


**C1/F1 DETAIL**  
 SCALE: 1:20MBS

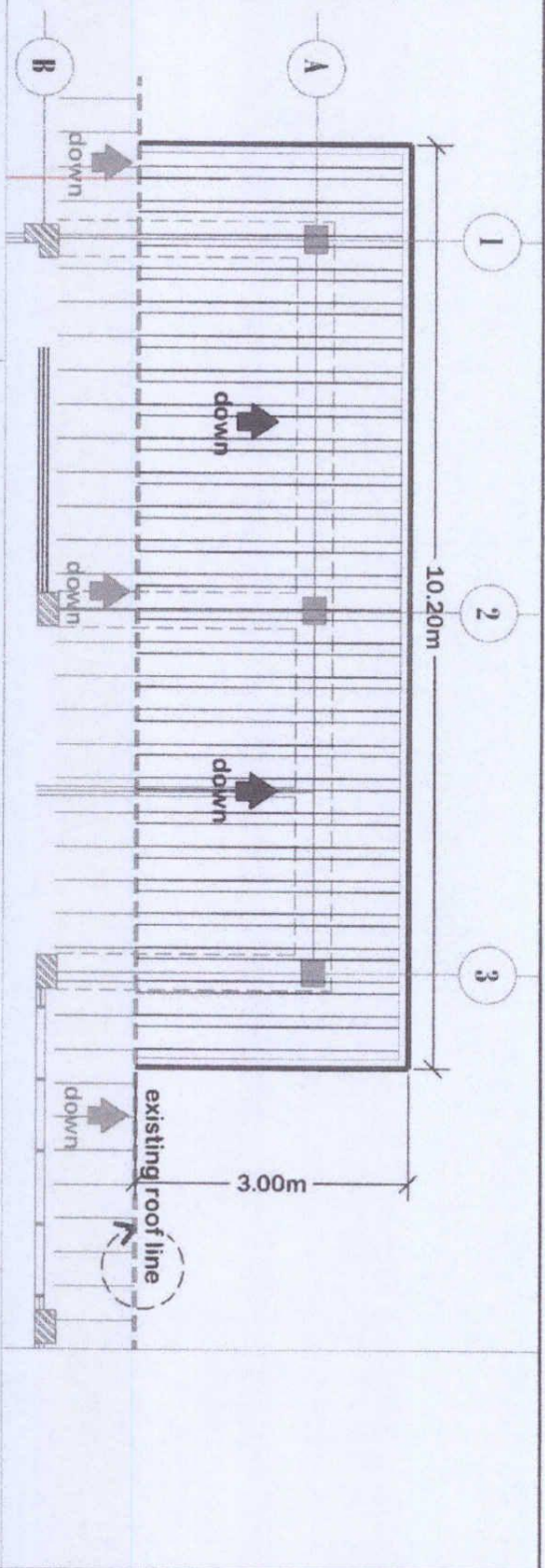




ROOF FRAMING PLAN  
Scale: 30m/10'

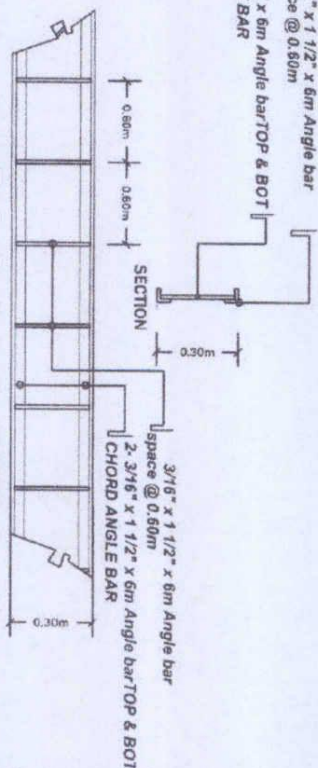


 <p>Carlos Hilado Memorial State College Municipal College</p>	<p>PROJECT TITLE: CONVERSION OF AGRICULTURE LABORATORY INTO SCHOOL CATERING PHASE II</p>	<p>DESIGNED BY: JOYELLE B. VERA, WED</p>	<p>CHECKED BY: SHEILA J. MANDAY</p>	<p>RECOMMENDING AGENCY: MRS. ROSALINA ALVAREZ</p>	<p>APPROVED: ROBERTO P. PUNCE, ARCHITECT, P.E.D.</p>	<p>PREPARED BY: SHEILA B. BARRERA, ARCHITECT</p>
	<p>PROJECT LOCATION: BANGALAYAN CAMPUS</p>	<p>CHECKED BY: SHEILA J. MANDAY</p>	<p>RECOMMENDING AGENCY: MRS. ROSALINA ALVAREZ</p>	<p>APPROVED: ROBERTO P. PUNCE, ARCHITECT, P.E.D.</p>	<p>PREPARED BY: SHEILA B. BARRERA, ARCHITECT</p>	<p>DATE: 08/15/2024</p>

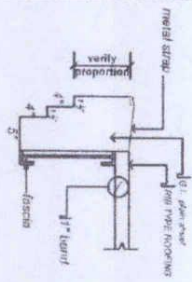


**R O O F P L A N**  
 Scale:  
 30mils.

**SECTION**  
 3/16" x 1 1/2" x 6m Angle bar  
 space @ 0.60m  
 2-3/16" x 1 1/2" x 6m Angle bar TOP & BOT  
 CHORD ANGLE BAR



**F A S C I A D E T A I L**  
 SCALE: 1:10MILS



**FALSE GUTTER DETAIL**  
 SCALE: 1:30MILS



Carlos Hilado Memorial State College  
 Division Office - Marikina City

PROJECT TITLE:  
 CONVERSION OF ADJACENT LANE LABORATORY INTO SCHOOL CANTEN PHASE II

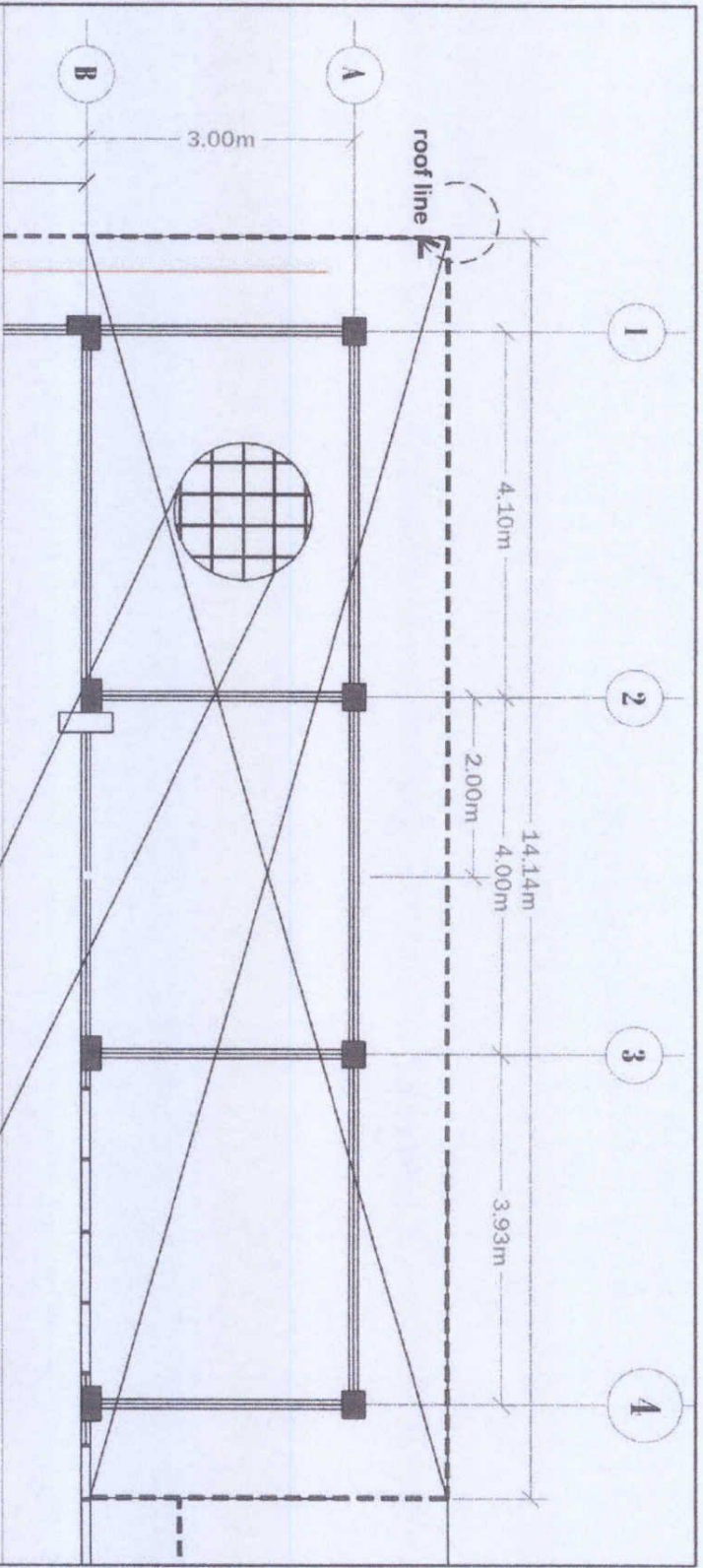
DESIGNED BY:  
 ENGR. JOY JIN J. MARQUEZ  
 PROJECT DIRECTOR

CHECKED BY:  
 ENGR. JOY JIN J. MARQUEZ  
 PROJECT DIRECTOR

RECOMMENDING APPROVAL:  
 ENGR. JOY JIN J. MARQUEZ  
 PROJECT DIRECTOR

APPROVED:  
 ENGR. JOY JIN J. MARQUEZ  
 PROJECT DIRECTOR

PREPARED, CHECKED, BY:  
 ENGR. JOY JIN J. MARQUEZ  
 PROJECT DIRECTOR



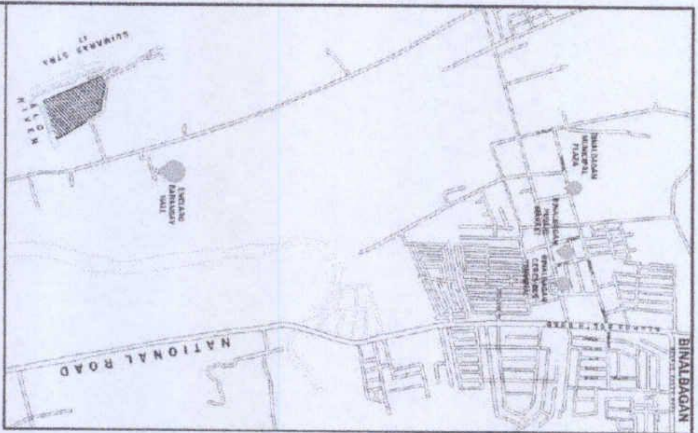
CEILING PLAN  
scale: 30mm

total area = 57.00 sq. m.

 <p>CARLOS HILADO MEMORIAL STATE COLLEGE Region IV - Calabarzon</p>	PROJECT TITLE	DESIGNED BY	CHECKED BY	RECOMMENDING APPROVAL	APPROVED	HEBAP	CHECKED BY
	CONVERSION OF AQUACULTURE LABORATORY INTO SCHOOL CANTEN (PHASE II)	ROSELY B. VENTURA BAUER	ENGR. JIMMY J. BAKROUD	ENGR. ROSELY B. VENTURA BAUER	ENGR. ROSELY B. VENTURA BAUER	ENGR. ROSELY B. VENTURA BAUER	ENGR. ROSELY B. VENTURA BAUER
	PROJECCION EN LA PLAZA CLAY						

METAL CURING SPOT DETAIL

METAL CURING SPOT DETAIL  
Scale: 1:10  
Material: 1/2" x 1/2" x 1/8"



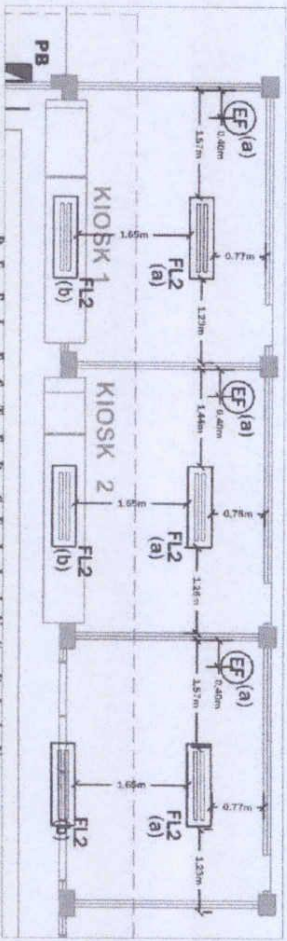
**VICINITY MAP**  
NOT DRAWN TO SCALE

**SPECIFICATIONS:**

1. SERVICE ENTRANCE SHALL BE INSTALLED AS OVERHEAD SERVICE W/ 30 mm<sup>2</sup> THW CU WIRE IN 1" Ø RSP PIPE.
2. SERVICE EQUIPMENT & BRANCH CIRCUIT FEEDERS SHALL BE AS SHOWN ON SINGLE LINE DIAGRAM
3. PREMISE WIRING METHOD SHALL BE IN RIGID PVC CONDUIT.
4. USE 2.0 mm<sup>2</sup> THHN CU WIRE FOR ALL INDIVIDUAL SNAP SWITCHES.
5. CONVENIENCE OUTLET & SWITCHES SHALL BE 0.30M & 1.20M ON THE CENTER FROM FINISHED FLOOR LINE RESPECTIVELY.
6. ALL ELECTRICAL WORKS HEREIN SHALL BE EXECUTED IN ACCORDANCE WITH THE LATEST EDITION OF THE PHILIPPINE ELECTRICAL CODE (PEC), THE NEW ELECTRICAL ENGINEERING LAW (R.A. 7920), LAWS AND ORDINANCES OF THE LOCAL GOVERNMENT UNIT AND RULES AND REGULATIONS OF THE LOCAL ELECTRICAL POWER UTILITY COMPANY.

**LEGENDS**

	CIRCUIT HOME RUN
	PANEL BOARD
	15 W LED BULB
	2 GANG CONVENIENCE OUTLET
	ACU OUTLET
	ONE-GANG SWITCH
	TWO-GANG SWITCH
	THREE-GANG SWITCH
	(2) Fluorescent Lamp
	EMERGENCY LIGHT OUTLET



**REFLECTED CEILING PLAN**  
1/8" scale



OFFICE OF THE PRESIDENT  
CARLOS PILLADO MENCHRIL  
STATE COLLEGE  
Negros Occidental

PROJECT TITLE:  
CONVERSION OF AQUACULTURE LABORATORY  
INTO SCHOOL CENTER (PHASE I)  
PROJECT LOCATION: BINALBAGAN CAMPUS

DESIGNED BY:  
*[Signature]*  
JOYVELLE B. VESCALINA, MAEd  
CAMPUS ENGINEER

CHECKED BY:  
*[Signature]*  
GENEQUIN J. BARROZ  
DIRECTOR IN CHARGE

RECOMMENDING APPROVAL:  
*[Signature]*  
MRS. ROSALBA S. TIVILAKA  
VICE PRESIDENT FOR ADMINISTRATION

APPROVED:  
*[Signature]*  
ROBERTO P. SANON, JR., MAEd, Ph.D.  
SIC PRESIDENT

DATE: 11/11/2023  
DRAWN BY: *[Signature]*  
SCALE: AS SHOWN

**E 1**  
**4**

**SCHEDULE OF LOADS (KIOSK 1)**

CIRCUIT NO.	DESCRIPTION	WATTS	VOLTAGE	AMP	CIRCUIT PROTECTION	CONDUCTOR SIZE	CONDUIT SIZE
C1	1. refrigerator outlet (500watts) 2. blender outlet(500watts) 3. rice cooker outlet(500watts) + 2kwatt fan (45 watts) + 1. (120V) 1. water dispenser outlet	2055	220	9.340909	30 AMP	5.5 mm <sup>2</sup> THW Wire	20 mm Ø PVC PIPE
C2	421: Fluorescent Lamp 18 LED tube 32 watts + 1. Emergency fan	756	220	1.169386	30 AMP	3.5 mm <sup>2</sup> THW Wire	20 mm Ø PVC PIPE
C3	421: Fluorescent Lamp 18 LED tube 32 watts + 1. Emergency fan	1500	220	6.818182	30 AMP	5.5 mm <sup>2</sup> THW Wire	20 mm Ø PVC PIPE
	TOTAL	3811		17.322727			

$I = 3.811 / 220 = 17.32 \text{ Amp.}$   
 $I = 17.32 \text{ Amp.} \times 1.25 = 21.65 \text{ Amp.}$   
 $I \text{ Amp.} = 80 \text{ AMP}$

Feeder Use 30mm<sup>2</sup> THW wire to T-9 RSC Pipe  
 Circuit Breaker Use 60 A, 2-pole on type, UL943C

**SCHEDULE OF LOADS (KIOSK 2)**

CIRCUIT NO.	DESCRIPTION	WATTS	VOLTAGE	AMP	CIRCUIT PROTECTION	CONDUCTOR SIZE	CONDUIT SIZE
C1	1. refrigerator outlet (500watts) 2. blender outlet(500watts) 3. rice cooker outlet(500watts) + 2kwatt fan (45 watts) + 1. (120V) 2. water dispenser outlet	2055	220	9.340909	30 AMP	5.5 mm <sup>2</sup> THW Wire	20 mm Ø PVC PIPE
C2	421: Fluorescent Lamp 18 LED tube 32 watts + 1. Emergency fan	256	220	1.169386	30 AMP	3.5 mm <sup>2</sup> THW Wire	20 mm Ø PVC PIPE
C3	421: Fluorescent Lamp 18 LED tube 32 watts + 1. Emergency fan	1500	220	6.818182	30 AMP	5.5 mm <sup>2</sup> THW Wire	20 mm Ø PVC PIPE
	TOTAL	3811		17.322727			

$I = 3.811 / 220 = 17.32 \text{ Amp.}$   
 $I = 17.32 \text{ Amp.} \times 1.25 = 21.65 \text{ Amp.}$   
 $I \text{ Amp.} = 80 \text{ AMP}$

Feeder Use 30mm<sup>2</sup> THW wire to T-9 RSC Pipe  
 Circuit Breaker Use 60 A, 2-pole on type, UL943C

**SCHEDULE OF LOADS (KIOSK 3)**

CIRCUIT NO.	DESCRIPTION	WATTS	VOLTAGE	AMP	CIRCUIT PROTECTION	CONDUCTOR SIZE	CONDUIT SIZE
C1	1. refrigerator outlet (500watts) 2. blender outlet(500watts) 3. rice cooker outlet(500watts) + 2kwatt fan (45 watts) + 1. (120V) 1. water dispenser outlet	2055	220	9.340909	30 AMP	5.5 mm <sup>2</sup> THW Wire	20 mm Ø PVC PIPE
C2	421: Fluorescent Lamp 18 LED tube 32 watts + 1. Emergency fan	256	220	1.169386	30 AMP	3.5 mm <sup>2</sup> THW Wire	20 mm Ø PVC PIPE
C3	421: Fluorescent Lamp 18 LED tube 32 watts + 1. Emergency fan	1500	220	6.818182	30 AMP	5.5 mm <sup>2</sup> THW Wire	20 mm Ø PVC PIPE
	TOTAL	3811		17.322727			

$I = 3.811 / 220 = 17.32 \text{ Amp.}$   
 $I = 17.32 \text{ Amp.} \times 1.25 = 21.65 \text{ Amp.}$   
 $I \text{ Amp.} = 80 \text{ AMP}$

Feeder Use 30mm<sup>2</sup> THW wire to T-9 RSC Pipe  
 Circuit Breaker Use 60 A, 2-pole on type, UL943C

LEGENDS
CIRCUIT LINE
CIRCUIT HOME RUN
PANEL BOARD
15 W LED BULB
2 GANG CONVENIENCE OUTLET
ACU OUTLET
ONE-GANG SWITCH
TWO-GANG SWITCH
THREE-GANG SWITCH
EMERGENCY LIGHT OUTLET



MARICINA CITY  
 DEPARTMENT OF EDUCATION  
 DIVISION OFFICE - MARIKINA CITY  
 PROJECT TITLE:

PROJECT TITLE: **CONVERSION OF AQUACULTURE LABORATORY INTO SCHOOL CATERING PHASED**  
 PROJECT LOCATION: **ENRIQUETA CAMPUS**

DESIGNED BY: *[Signature]*  
 CHECKED BY: *[Signature]*  
 RECOMMENDED APPROVAL: *[Signature]*

APPROVED: *[Signature]*  
 DATE: **06-10-2022**

REVISIONS: **2**  
 DATE: **06-10-2022**



OFFICE OF THE REGISTRAR  
CARLOS HILADO MEMORIAL  
STATE COLLEGE  
MAGAYCAYAN

PROJECT TITLE  
CONVERSION OF AQUACULTURE LABORATORY  
INTO SCHOOL GAITHERY (PHASE II)  
CAMPUS ONE, MAGAYCAYAN

DESIGNED BY  
JOHN B. YANAGI, MGR  
CARLOS HILADO MEMORIAL STATE COLLEGE

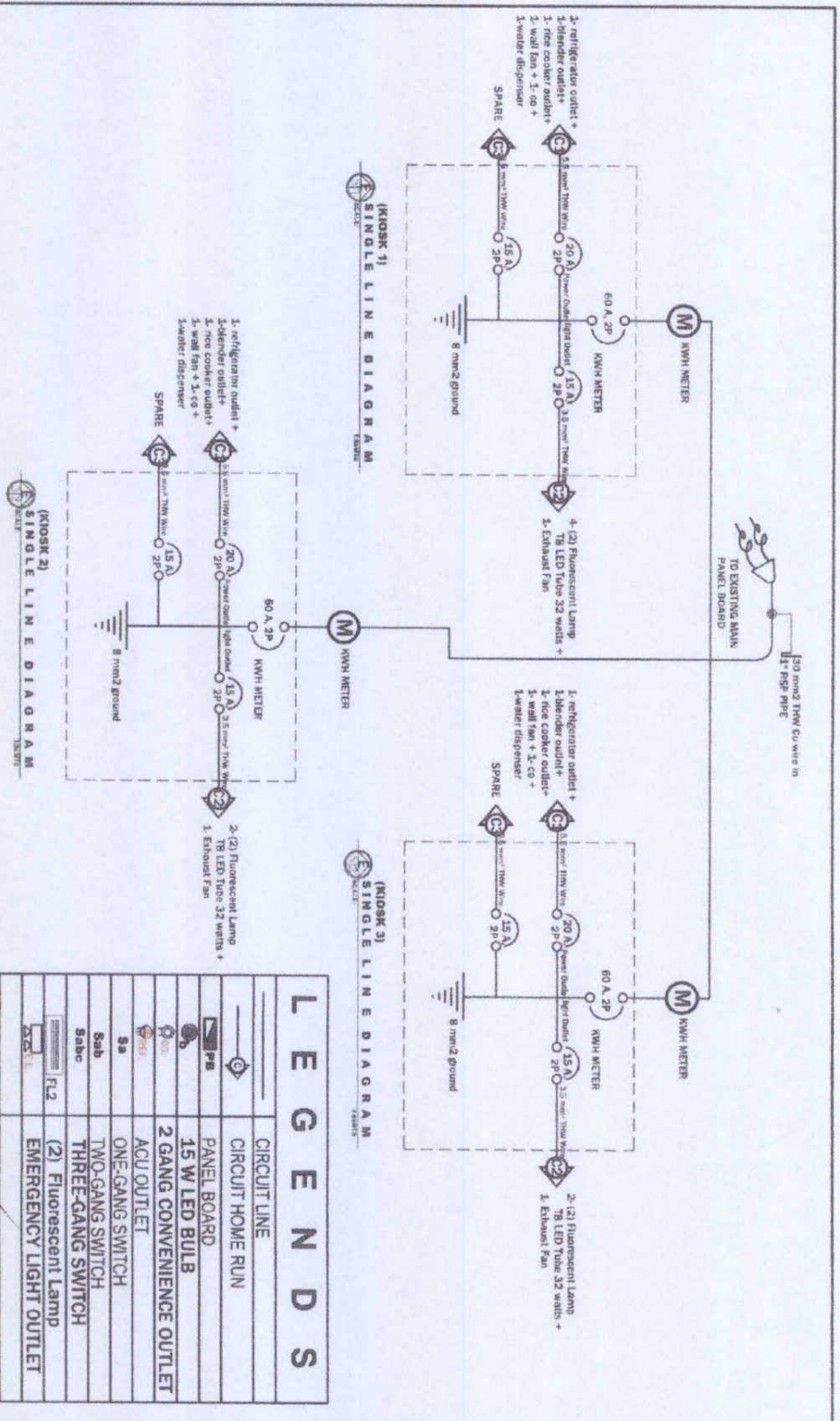
CHECKED BY  
JOHN B. YANAGI, MGR  
CARLOS HILADO MEMORIAL STATE COLLEGE

RECOMMENDING APPROVAL  
JOHN B. YANAGI, MGR  
CARLOS HILADO MEMORIAL STATE COLLEGE

APPROVED  
JOHN B. YANAGI, MGR  
CARLOS HILADO MEMORIAL STATE COLLEGE

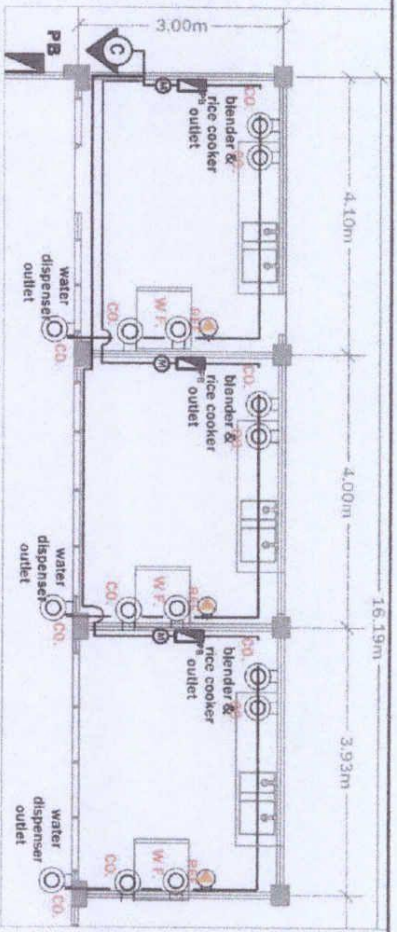
DATE OF APPROVAL  
MAY 15, 2024

PROJECT NO.  
34

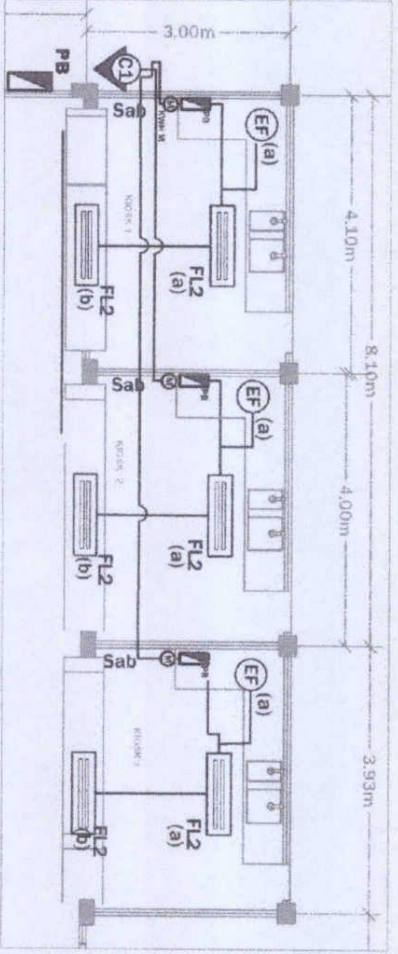


# LEGENDS

	CIRCUIT LINE
	CIRCUIT HOME RUN
	PANEL BOARD
	15 W LED BULB
	2 GANG CONVENIENCE OUTLET
	ACU OUTLET
	ONE-GANG SWITCH
	TWO-GANG SWITCH
	THREE-GANG SWITCH
	(2) Fluorescent Lamp
	EMERGENCY LIGHT OUTLET



**POWER LAYOUT PLAN**  
 scale: 45m/s



**LIGHTING LAYOUT PLAN**  
 scale: 45m/s

LEGENDS	
	CIRCUIT LINE
	CIRCUIT HOME RUN
	PANEL BOARD
	15 W LED BULB
	2 GANG CONVENIENCE OUTLET
	ACU OUTLET
	ONE-GANG SWITCH
	TWO-GANG SWITCH
	THREE-GANG SWITCH
	(2) Fluorescent Lamp
	EMERGENCY LIGHT OUTLET

	HEAD OF THE PROJECT <b>CARLOS HILADO MEMORIAL STATE COLLEGE</b> Naga City, Sorsogon	PROJECT TITLE <b>CONVERSION OF AQUACULTURE LABORATORY INTO SCHOOL CATERING PHASE II</b>	ENGINEER BY 	CHECKED BY 	RECOMMENDING APPROVAL 	APPROVED 	DRAWN BY 	SHEET NO. <b>44</b>
	PROJECT LOCATION: <b>EMERALDA CAMPUS</b>	CANNED DRAWING	DIRECTOR/INCHARGE	SUC PRESIDENT/CO-ORDINATOR	SUC PRESIDENT	SUC PRESIDENT	SUC PRESIDENT	SHEET NO. <b>44</b>